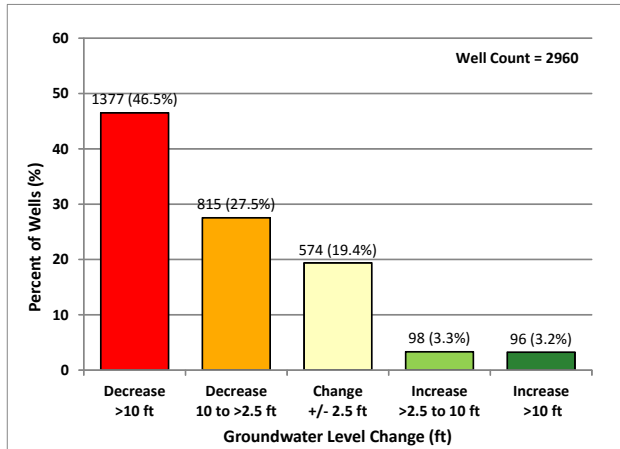
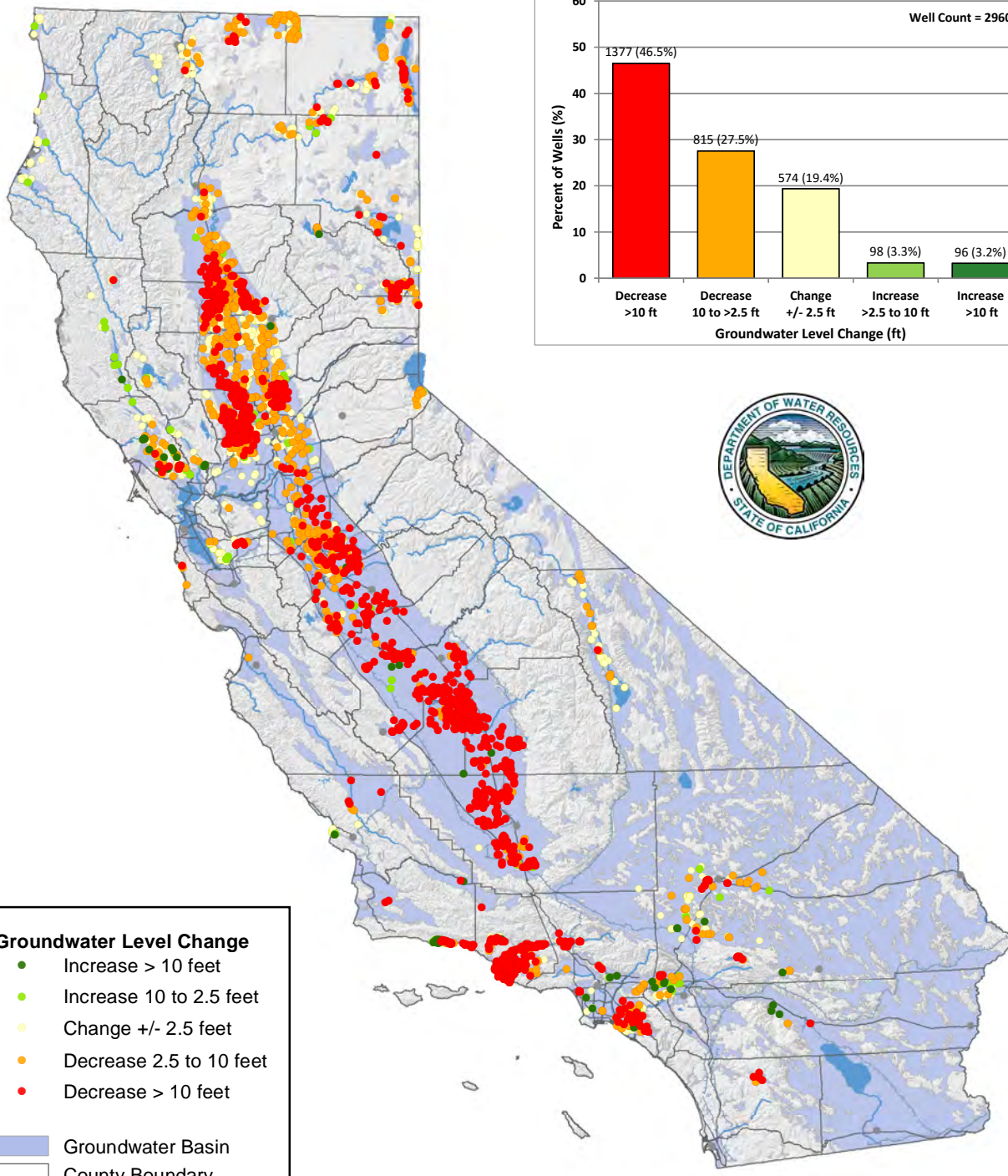


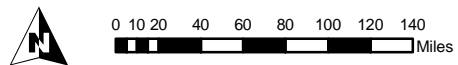
Groundwater Level Change* - Spring 2011 to Spring 2016



Groundwater Level Change

- Increase > 10 feet
- Increase 10 to 2.5 feet
- Change +/- 2.5 feet
- Decrease 2.5 to 10 feet
- Decrease > 10 feet

- Groundwater Basin
- County Boundary
- Major Highway
- Major Canal



*Groundwater level change determined from water level measurements in wells. Map and chart based on available data from the DWR Water Data Library as of 2/14/2017. Document Name: DOTMAP_S2016-S2011 Updated: 5/8/2017 Data subject to change without notice.