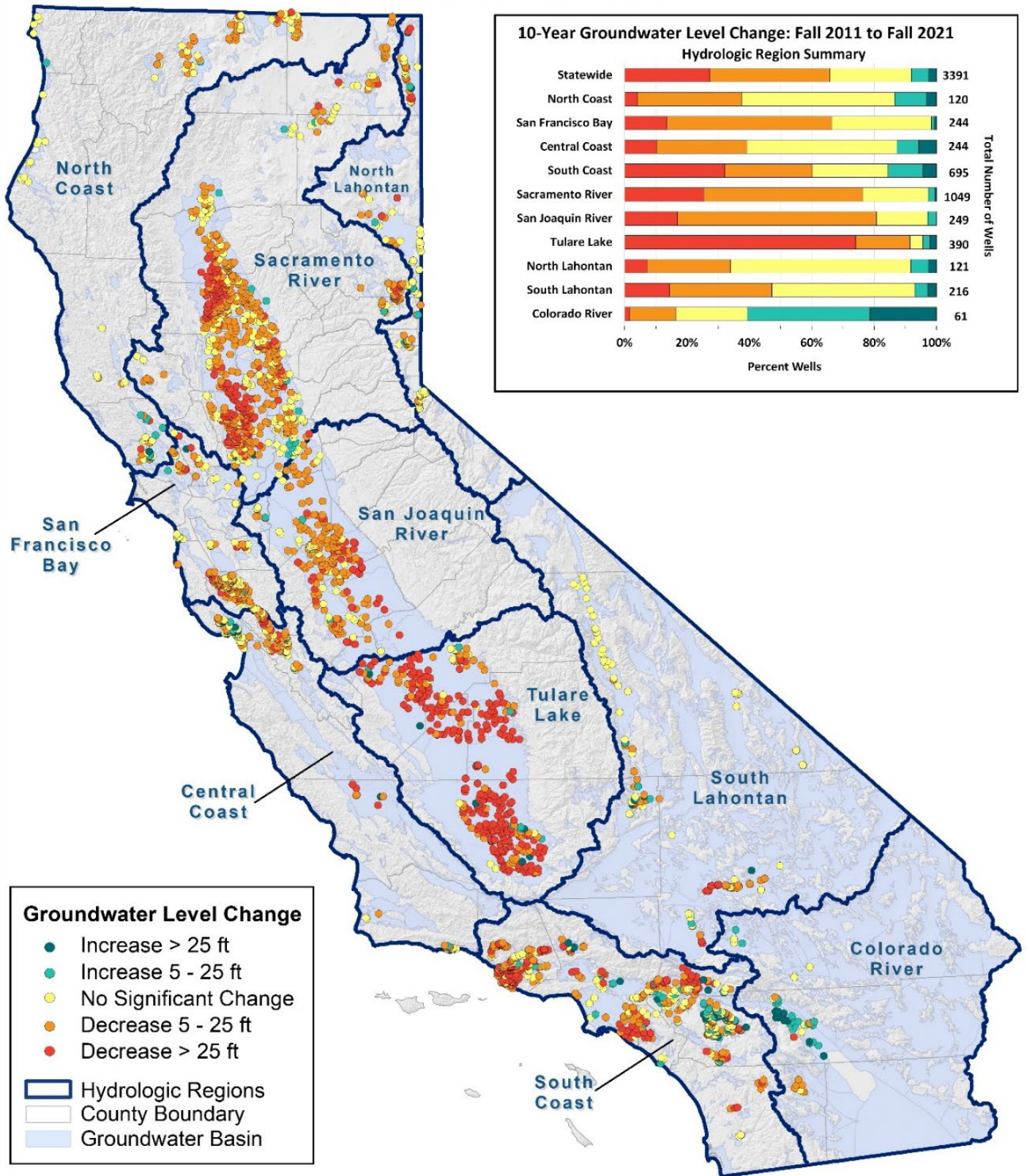


Ten-Year Groundwater Level Change Fall 2011 to Fall 2021



*Groundwater level change map for 10-year comparison between fall 2011 and 2021. Groundwater level change determined from water level measurements in wells. Map and chart based on available data from the DWR Enterprise Water Management Database as of 01/14/2022. Map Updated: 01/20/2022.

