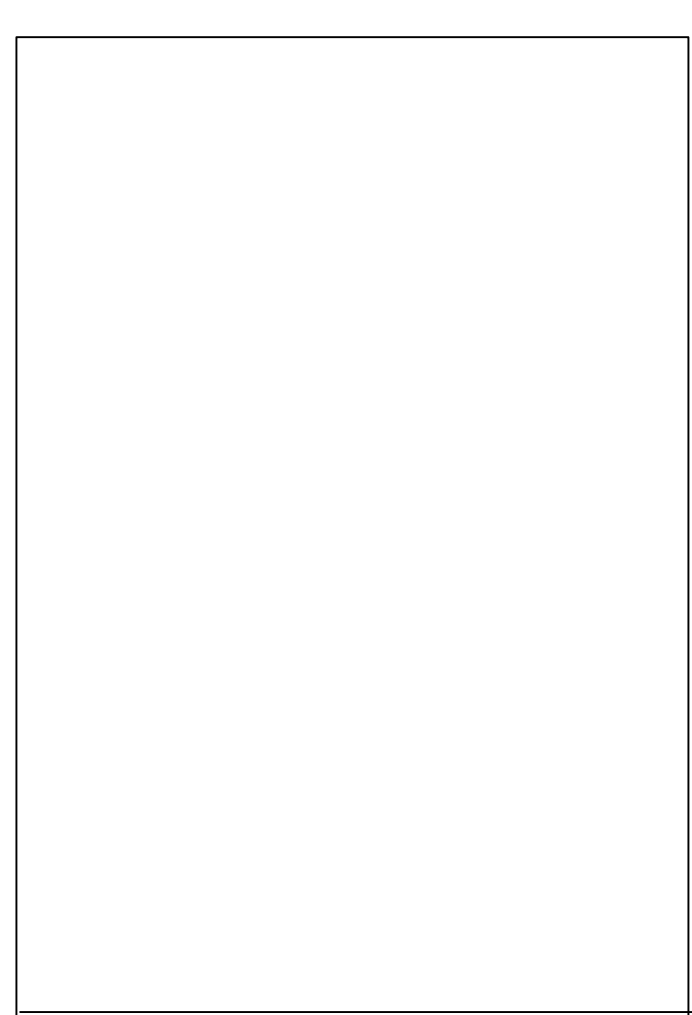
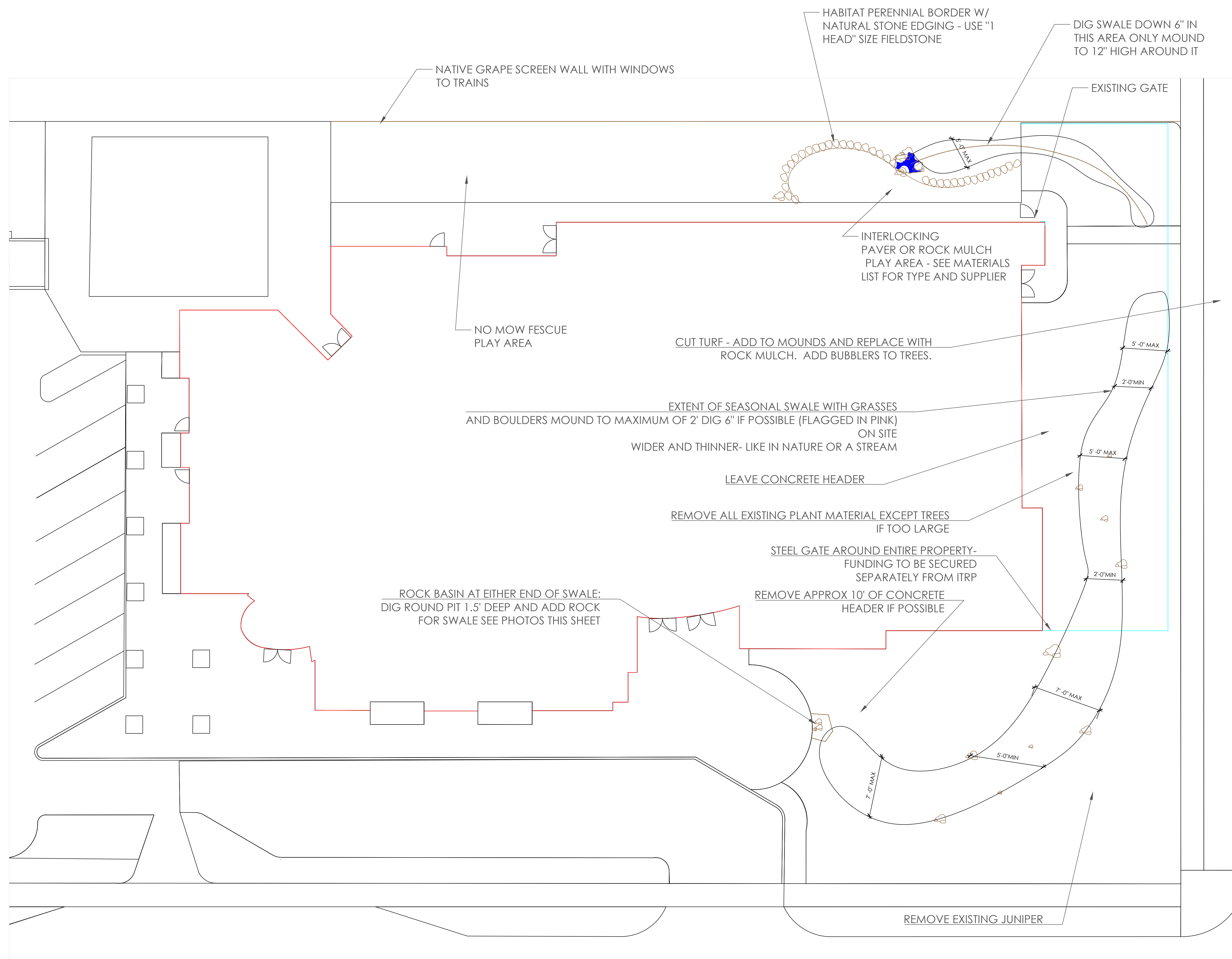


FINAME

REVDATE

USER



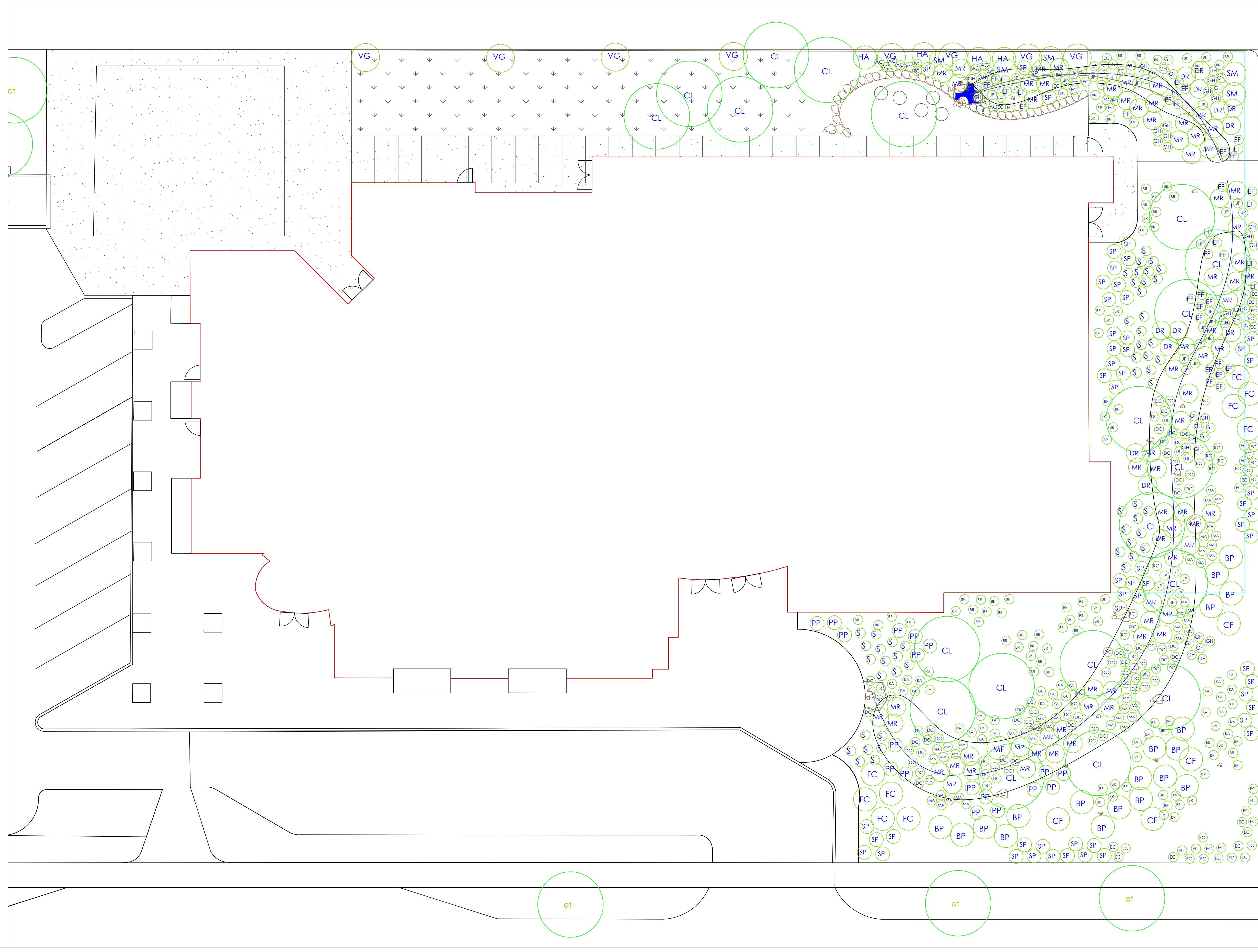
MCCOMBS YOUTH CENTER
615 W. 15TH STREET MERCED, CA. 95340
LAYOUT PLAN

No.	Revision/Issue	Date
	CONSTRUCTION APRIL 2017	

DESIGNED BY:
 THE HABITAT CORRIDOR
 PROJECT

CONTACT: APRIL
 OWENS 707.331.2070

Project	BOYSGIRLS	Sheet
Date	SEPT2016	L-1
Scale	1"=0=20'-0"	



MCCOMBS YOUTH CENTER
615 W. 15TH STREET MERCED, CA. 95340
PLANTING PLAN

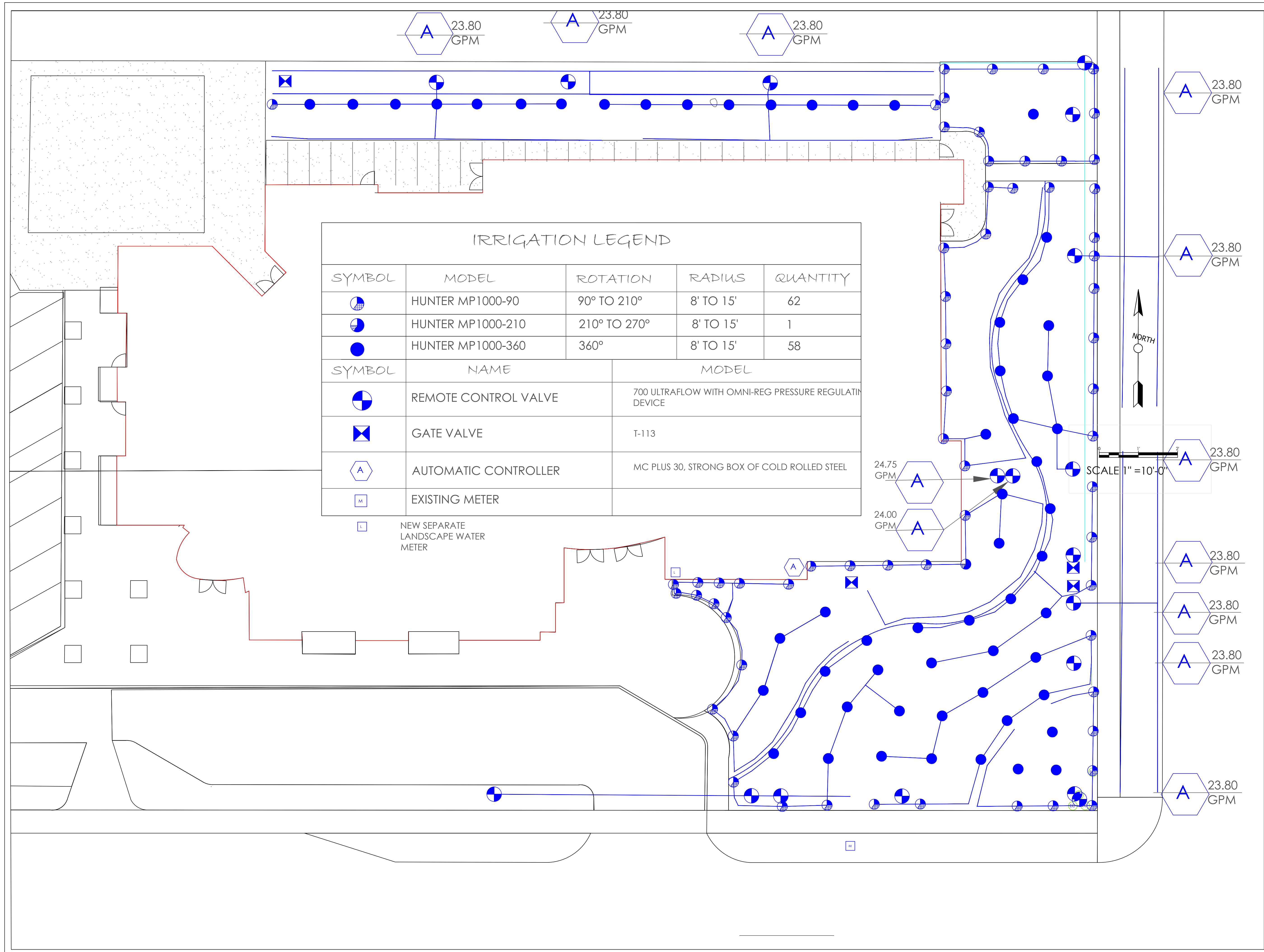
CONSTRUCTION APRIL 2017		
No.	Revision/Issue	Date

DESIGNED BY:
 THE HABITAT CORRIDOR
 PROJECT

CONTACT: APRIL
 OWENS 707.331.2070

Project	BOYSGIRLS	Sheet
Date	SEPT2016	L-2
Scale	1"=20'-0"	

USER REVDATE FINAME



IRRIGATION LEGEND

SYMBOL	MODEL	ROTATION	RADIUS	QUANTITY
	HUNTER MP1000-90	90° TO 210°	8' TO 15'	62
	HUNTER MP1000-210	210° TO 270°	8' TO 15'	1
	HUNTER MP1000-360	360°	8' TO 15'	58
SYMBOL	NAME	MODEL		
	REMOTE CONTROL VALVE	700 ULTRAFLOW WITH OMNI-REG PRESSURE REGULATING DEVICE		
	GATE VALVE	T-113		
	AUTOMATIC CONTROLLER	MC PLUS 30, STRONG BOX OF COLD ROLLED STEEL		
	EXISTING METER			
	NEW SEPARATE LANDSCAPE WATER METER			

**MCCOMBS YOUTH CENTER
615 W. 15TH STREET MERCED, CA. 95340
IRRIGATION PLAN**

CONSTRUCTION APRIL 2017		
No.	Revision/Issue	Date

DESIGNED BY:
THE HABITAT CORRIDOR
PROJECT

CONTACT: APRIL
OWENS 707.331.2070

Project BOYSGIRLS	Sheet
Date APRIL 2017	L-3
Scale 1"=20'-0"	

PLANT LIST

LEGEND					
SYMBOL	BOTANICAL NAME	COMMON NAME	SIZE	QUANTITY	SOURCES
AC	ASTER CHILENSIS	CALIFORNIA ASTER	1 GAL OR 4"	9	ANTELOPE VALLEY RESERVE EDWARDSVILLE NURSERY 10148 WEST AVE LANCASTER, CA 93534 PHONE: 814 724 2204 EMAIL: AV@ANTLOPEVALLEYRESERVE.ORG
BP	BACCHARIS PILLULARIS	COYOTE BUSH	1 GAL OR 4"	19	
BR	BERBERIS REPENS	MAHONIA	1 GAL OR 4"	89	
CF	CIRCIDIUM FLORIDUM	PALO VERDE	5 GAL	4	CENTRAL OGALET WILDS 3384 OOLF CLUB DRIVE SANTA CRUZ, CA 95060 PHONE: 831 439 2655 EMAIL: INFO@CENTRALCOASTWILDS.COM
CL	CHILOPSIS LINEARIS	DESERT WILLOW	5 OR 15 GAL	20	EL NATHAN GREENBERG, INC. 201 S. ROCKAWAY ROAD AZUSA, CA 91702 PHONE: 626 897 8649 EMAIL: SALES@ELNATHANVORWORKERS.COM
DR	DENDROMECON RIGIDA	DESERT POPPY	1 GAL OR 4"	13	ELKHORN NATIVE PLANT NURSERY 1028 HIGHWAY MORNING STAR, CA 95209 PHONE: 814 763 3207 WEB SITE CONTACT: WWW.ELKHORNURSERY.COM/CONTACTORERRING
DC	DESCHAMPSIAS CAESPITOSA	HAIR GRASS	1 GAL OR 4"	76	LAS PLATAS NURSERY 222 LAS PLATAS RD SANTA MARGARITA, CA 95403 PHONE: 805 641 9900 EMAIL: PERRY@LASPLATAS.COM
EC	EPILOBIUM CANUM	CA FUSCHSIA	1 GAL OR 4"	50	
EF	ERIOGONUM FASCICULATUM	CA BUCKWHEAT	1 GAL OR 4"	37	MANGONITA NURSERY 805 CHALK HILL ROAD SOLVANG, CA 95463 PHONE: 805 688 8992 EMAIL: MANGONITANURSERY@GMAIL.COM
FC	FREMONTODENDRON 'KEN TAYLOR'	FLANNEL BUSH	1 GAL OR 4"	9	
GH	GRINDELIA HIRSUTULA	GUM PLANT	1 GAL OR 4"	41	MATILLO NURSERY 820 WATER ROAD MORNING STAR, CA 95201 PHONE: 805 333 8044 WEB SITE CONTACT: WWW.MATILLOURSERY.COM/CONTACTUS
HA	HETEROMELES ARBUTIFOLIA	TOYON	1 GAL OR 4"	4	
JP	JUNCUS PATENS	CA GRAY RUSH	1 GAL OR 4"	38	
KA	KECKIELLA ANTIRRHINOIDES	DESERT SNAP DRAGON	1 GAL OR 4"	32	MORNING STAR NURSERY 1028 HIGHWAY RIVERIDE, CA 95204 PHONE: 814 763 3207 EMAIL: INFO@MORNINGSTARBRDNURSERY.COM
MF	MALOCATHAMNUS FASCICULATUS	CHAPARRAL MALLOW	1 GAL OR 4"	1	
MA	MIMULUS AURANTIACUS	STICKY MONKEY FLOWER	1 GAL OR 4"	44	
MR	MUHLENBERGIA RIGENS	DEER GRASS	1 GAL OR 4"	71	SANJA CREEK WILDLIFE NURSERY 3281 EAST CARMEL VALLEY ROAD CARMEL VALLEY, CA 95008 PHONE: 831 439 2837 EMAIL: SALES@SANJACREEKNURSERY.COM
PP	PENSTEMON PALMERI	PALMER'S BEARDTONGUE	1 GAL OR 4"	19	
RC	ROMNEYA COULTERI	MATILLO POPPY	1 GAL OR 4"	12	
SA	SALVIA GREGII RED	RED GREGII SAGE	1 GAL OR 4"	0	
S	SALVIA 'BEE'S BLISS'	BEE'S BLISS SAGE	1 GAL OR 4"	52	SALVIA'S HERBACEA NATIVES 1490 CALLE REAL GARDENIA, CA 95119 PHONE: 805 898 4914 EMAIL: JEFF@SALVIA.COM
SP	SALVIA 'POZO BLUE'	POZO BLUE SAGE	1 GAL OR 4"	56	
SM	SAMBUCUS MEXICANA	ELDERBERRY	1 GAL OR 4"	5	THEODORE PAYNE FOUNDATION FOR WILD FLORISTS AND NATIVE PLANTS 1040 HARBOUR DR SAN VALLEY, CA 95362 PHONE: 916 961 9622 WEB SITE CONTACT: THEODOREPAYNE.ORG/CONTACT
VG	VITUS GIRDIANA	DESERT GRAPE	1 GAL OR 4"	8	

SITE NOTES

SITE PREPARATION- CLEAR EXISTING PLANT MATERIALS INCLUDING ALL TREES EXCEPT IN PARKING STRIP, CUT TURF AND CREATE MOUNDS AS NOTED ON L-1, FLAG EXISTING IRRIGATION HEADS, DIG SWALE AS DETAILED. PROTECT ANY EXISTING TREES FOR PROJECT INSTALLATION.

1. IRRIGATION - ALL EXISTING HEADS TO BE CONVERTED TO RAINBIRD RH13 SERIES HEADS. IRRIGATION SCHEDULE TO BE ADJUSTED PER SEASON AS RECOMMENDED BY THE HABITAT CORRIDOR PROJECT.
2. PLANTING - PLANTS TO BE LAID OUT PER PLAN AND ADJUSTED BY HABITAT CORRIDOR PROJECT IF NECESSARY. PLEASE GIVE ONE WEEK NOTICE FOR HABITAT CORRIDOR PROJECT (HCP) TO VISIT SITE 707.331.2070.
3. PLANTING- ALL PLANTS ON LIST AVAILABLE AT SOURCE NOTED ON LEGEND.
4. PLANTING- PLANTS ON HOLD AT MULTIPLE LOCATIONS CONTACT HABITAT CORRIDOR PROJECT AT 707.331.2070 4 DAYS BEFORE NEEDED SOONER IF POSSIBLE.
5. AFTER INSTALLATION OF PLANTS AND RETROFIT OF IRRIGATION, ROCK MULCH 1-2" ENTIRE SITE. SEE MATERIALS LIST FOR TYPE.

MATERIALS:
SUPPLIERS:

YARD MASTERS

Address: [1968 Business Park Way, Merced, CA 95348](#) Send directions to phone

Phone: (209) 722-3056

BOULDERS PLUS

Address: [3524 Atwater Blvd, Atwater, CA 95301](#) Send directions to phone

Phone: (209) 358-7625

EWING IRRIGATION:

[Ewing Irrigation](#)

www.ewingirrigation.com

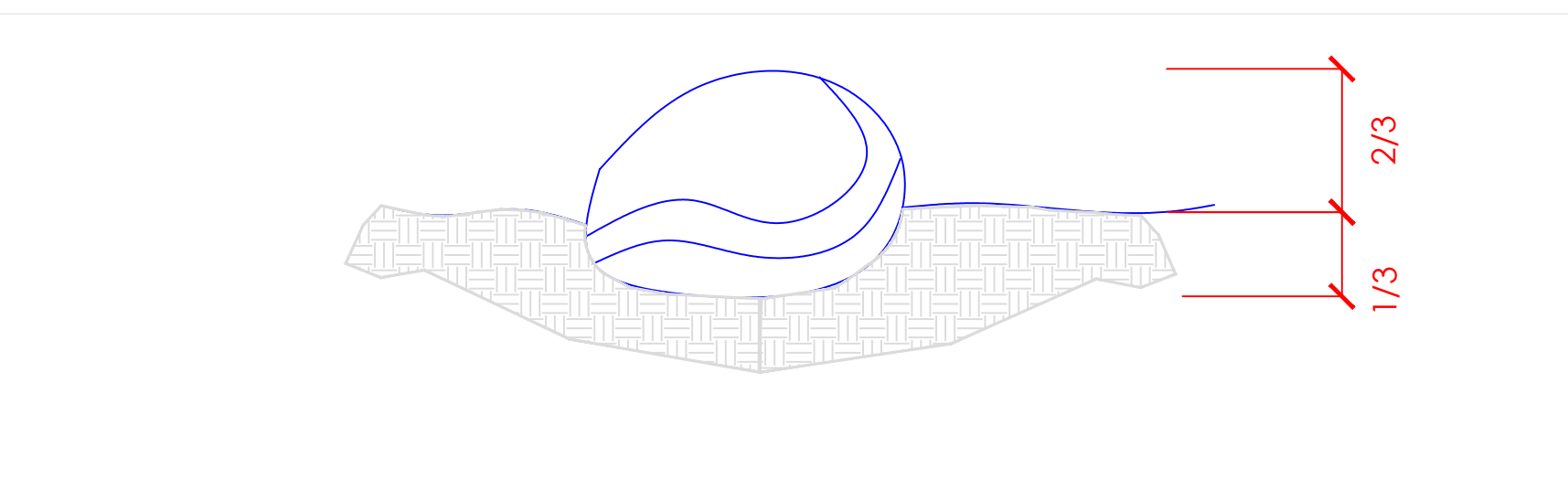
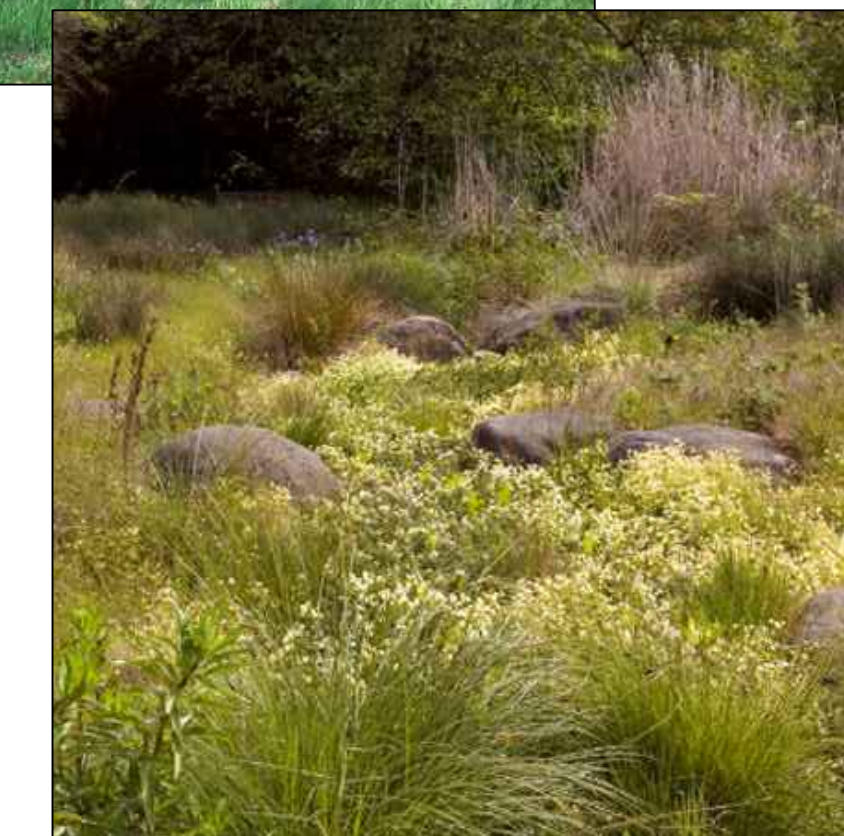
[1160 W 15th St, Merced, CA 95340](#)

[Send directions to phone](#)

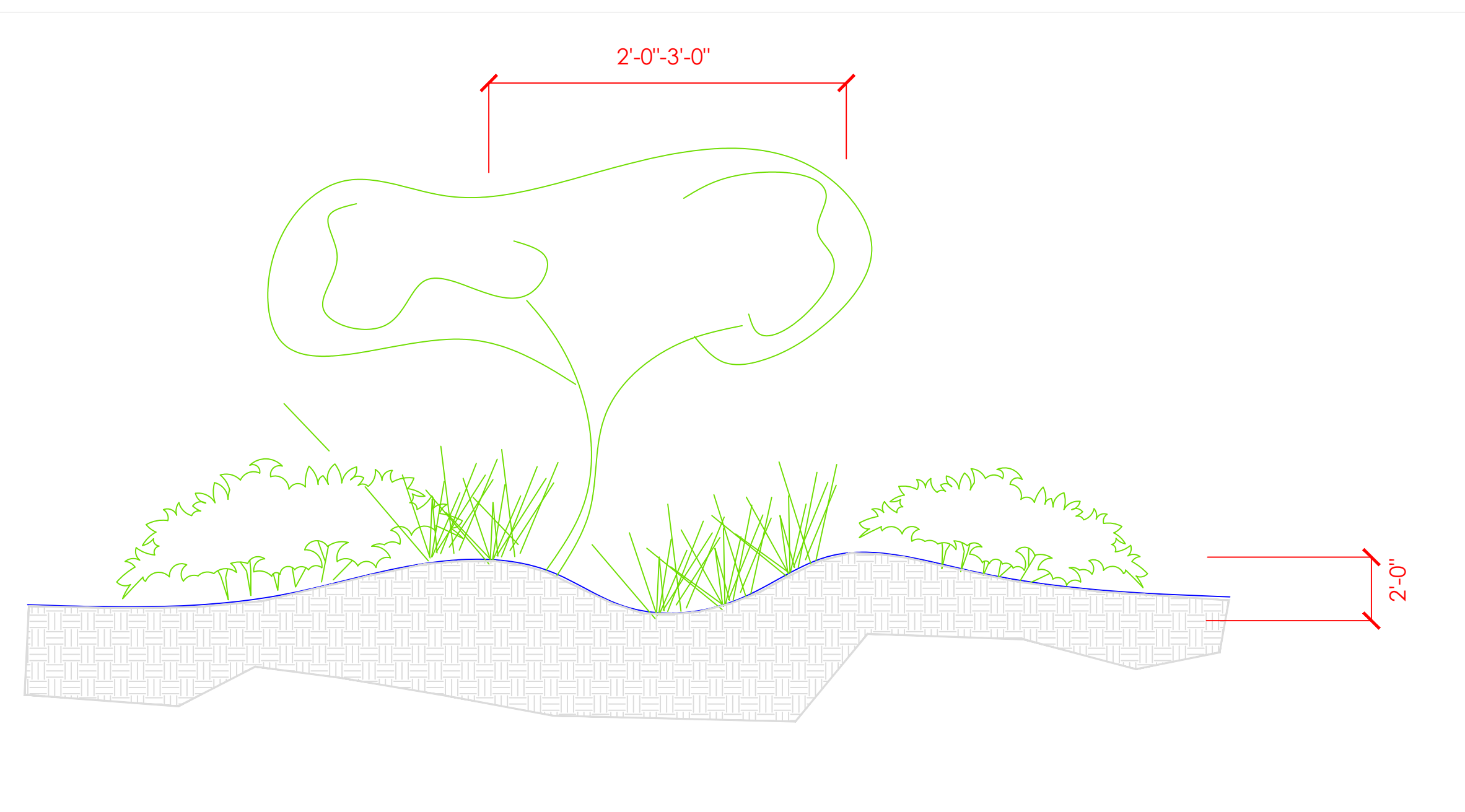
Ask for Dwight Howell 209.388-9530

- TOP SOIL 25 YARDS (FOR MOUNDS AROUND SWALES)
- ROCK MULCH- 18" CRUSHED ROCK
- BOULDERS- BOULDERS PLUS OR MERCED NATURAL STONE
- APPROX 6-10 LARGE SIZE 2'X3' AND ONE BIN HEAD SIZE FOR BACK BORDER AND ROCK SINKS AT BEGINNING AND END OF SWALE

IRRIGATION - SWITCH OUT ALL EXISTING IRRIGATION HEADS TO SPECIFIED MP ROTORS - SEE IRRIGATION PLAN EWING IRRIGATION TO PROVIDE TRAINING DWIGHT HOWELL BRANCH MANAGER 209.388.9530 OR CALL HCP 707.3331.2070 TO ARRANGE TRAINING.



DETAIL 2A - BOULDER OUTCROPPING



DETAIL 2B - MOUNDED SWALE WITH GRASSES

DETAIL 1 - SWALE

MCCOMBS YOUTH CENTER
 615 W. 15TH STREET MERCED, CA. 95340
 SITE NOTES AND LEGEND

REVISION - PLANT COUNTS CONSTRUCTION APRIL 2017	9/21
No.	Revision/Issue Date

DESIGNED BY:
THE HABITAT CORRIDOR PROJECT

CONTACT: APRIL OWENS 707.331.2070

Project BOYSGIRLS	Sheet
Date APRIL 2017	L-4
Scale NTS	

F. HAWLE

REV. VJAL

USER

BOYS AND GIRLS CLUB OF MERCED PLANT LIST

SYMBOL	BOTANIC NAME	COMMON NAME	QUANTITY	SIZE
AC	ASTER CHILENSIS	ASTER		9 1G OR 4"
BP	BACCHARIS PILULARIS	COYOTE BUSH		18 1G OR 4"
BR	BERBERIS REPENS	MAHONIA		71 1G OR 4"
CF	CIRCIDIUM FLORIDUM	PALO VERDE		3 5 GAL
CL	CHILOPSIS LINEARIS	DESERT WILLOW		19 5 GAL OR 15 GAL
DC	DESCHAMPSIAS CAESPITOSA	HAIR GRASS		50 1G OR 4"
DR	DENDROMECON RIGIDA	DESERT POPPY		12 1G OR 4"
EC	EPILOBIUM CANUM	CAL. FUCHSIA		41 1G OR 4"
EF	ERIOGONUM FASCICULATUM	CALIFORNIA BUCKWHEAT		32 1G OR 4"
FC	FREMONTODENDRON 'KEN TAYLOR'	FLANNEL BUSH		22 1G OR 4"
GH	GRINDELIA HIRSUTULA	GUM PLANT		37 1G OR 4"
HA	HETEROMELES ARBUTIFOLIA	TOYON		4 1G OR 4"
KA	KECKIELLA ANTIRRHINOIDES	DESERT SNAP DRAGON		33 1G OR 4"
MA	MIMULUS AURANTIACUS	STICKY MONKEYFLOWER		27 1G OR 4"
MR	MUHLENBERGIA RIGENS	DEER GRASS		69 1G OR 4"
SA	SALVIA 'RED' OR GREGII	AUTUMN SAGE ANY COLOR		25 1 GAL
S	SALVIA 'BEE'S BLISS'	BEE'S BLISS SAGE		32 1G OR 4"
SM	SAMBUCUS MEXICANA	ELDERBERRY		7 1G OR 4"
SP	SALVIA 'POZO BLUE'	POZO BLUE SAGE		46 1G OR 4"
VG	VITUS GIRDIANA	DESERT GRAPE		8 1G OR 4"

TOTAL:

565

NO MOW FESCUE

SOURCE: DELTA BLUE GRASS

2,000 SF