

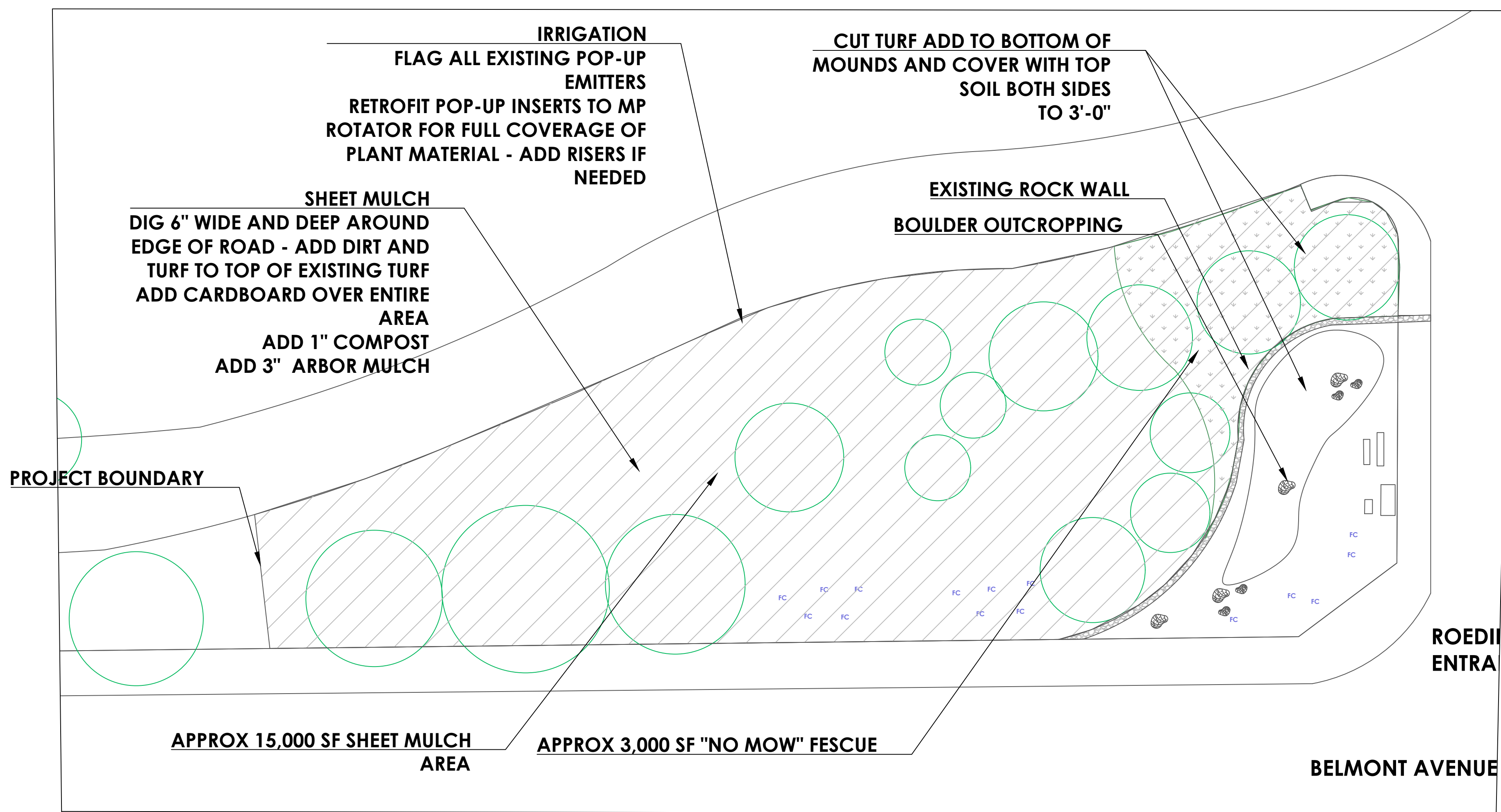


**ROEDING PARK ENTRANCE RENOVATIONS  
894 WEST BELMONT AVENUE  
FRESNO, CA 93728  
TURF REPLACEMENT PLANS - HARDSCAPE**

AUGUST 2017 -	APP SET
OCTOBER 15	2017
No.	Revision/Issue
	Date

**DESIGNED BY:**  
The Habitat Corridor  
Project  
**PROJECT CONTACT:**  
APRIL OWENS  
707.331.2070

Project -	ROEDING	Sheet
Date	MAY 2017	<b>L-1</b>
Scale	1"=10'	

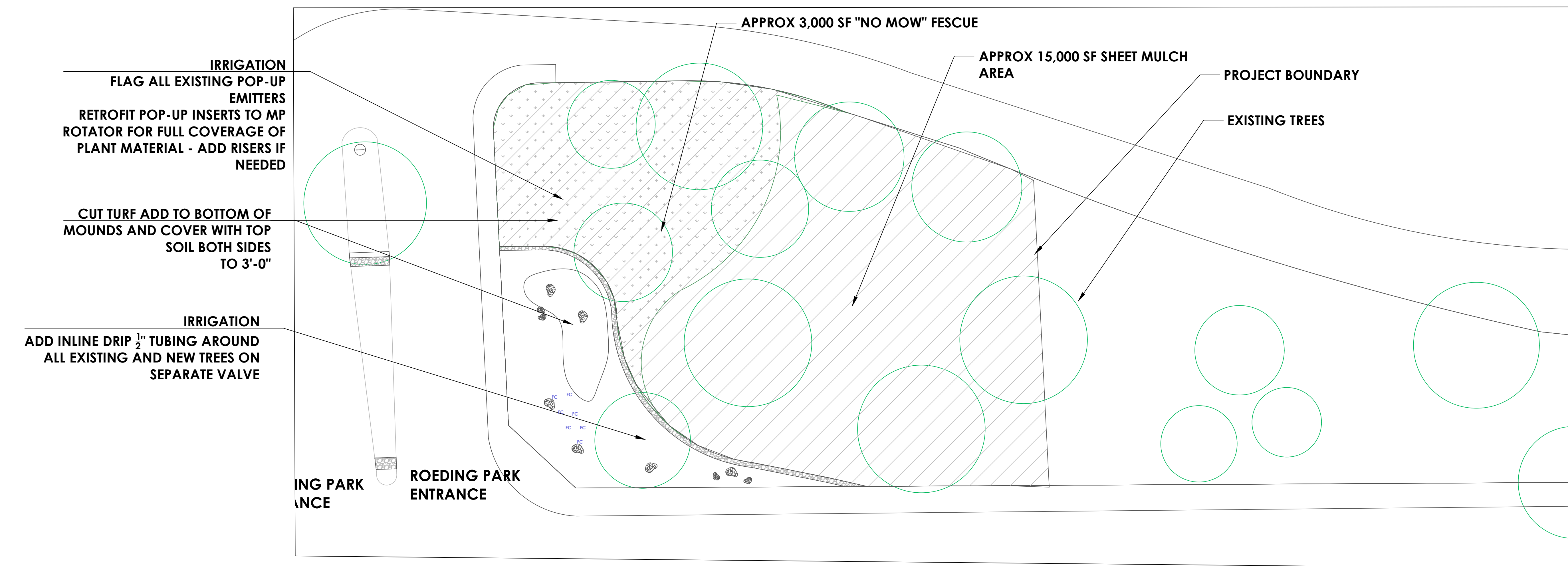


**WEST OF  
ENTRANCE - PLANTING  
AREA:**  
AREA = 23,328 SF

**EAST OF  
ENTRANCE - PLANTING  
AREA:**  
AREA = 29,154 SF

**SHEET MULCH BOTH SIDES:**  
AREA = 15,000 SF WEST  
AREA = 16,000 SF EAST

**TOTAL TURF  
REPLACEMENT:  
APPROXIMATELY  
52,500 SF**



USER REVDATE FNAME

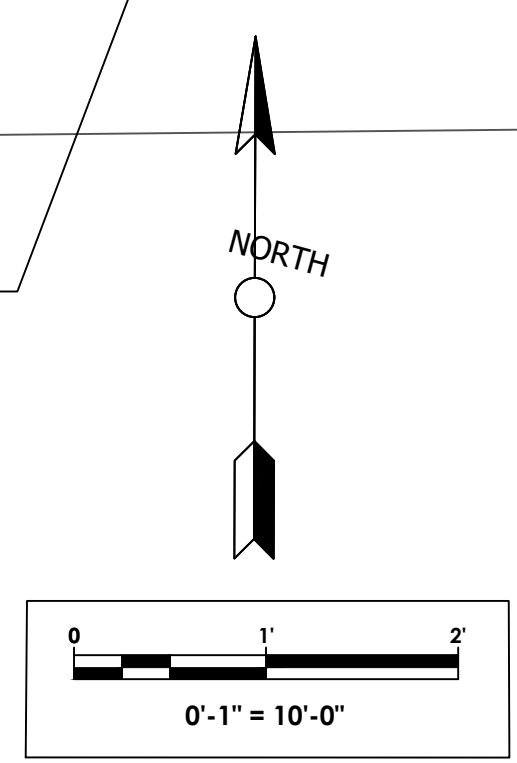


**ROEDING PARK ENTRANCE RENOVATIONS  
894 WEST BELMONT AVENUE  
FRESNO, CA 93728  
TURF REPLACEMENT PLANS - PLANTING**

AUGUST 2017 -	APP SET
OCTOBER 15	2017
No.	Revision/Issue
	Date

**DESIGNED BY:**  
The Habitat Corridor  
Project  
**PROJECT CONTACT:**  
APRIL OWENS  
707.331.2070

Project	ROEDING	Sheet	
Date	MAY 2017		<b>L-1</b>
Scale	1"=10'		



**FREMONTODENDRON 'KEN TAYLOR'**  
(GROUNDCOVER FLANNEL BUSH)

**Erigonum fasciculatum**  
(CA Buckwheat)

**ARCTOSTAPHYLOS 'BERT JOHNSON'**  
(MANZANITA)

**Eriogonum grande Rubescens**  
(Pink Buckwheat)

**ZAUSCHNERIA 'WAYNE'S SILVER OR OTHER'**  
(CALIFORNIA FUCHSIA)

**DESCHAMPسيا CAESPITOSA**  
(HAIR GRASS)

**Phyla nodiflora**  
(Common Lippia)

**Ceanothus 'DARK STAR'**  
(CALIFORNIA LILAC)

**Callidrina Californica**  
(Baja Fairy Duster)

**Atriplex lentiformis Breweri**  
(Salt Bush)

**BOULDER OUTCROPPING**

**Eriophyllum lanatum Siskiyou**  
(Dwarf Woolly Sunflower)

**SALVIA 'CELESTIAL BLUE'**  
(PURPLE SAGE)

**CHILOPSIS LINEARIS**  
(DESSERT WILLOW)

**MUHLENBERGIA RIGENS**  
(DEER GRASS)

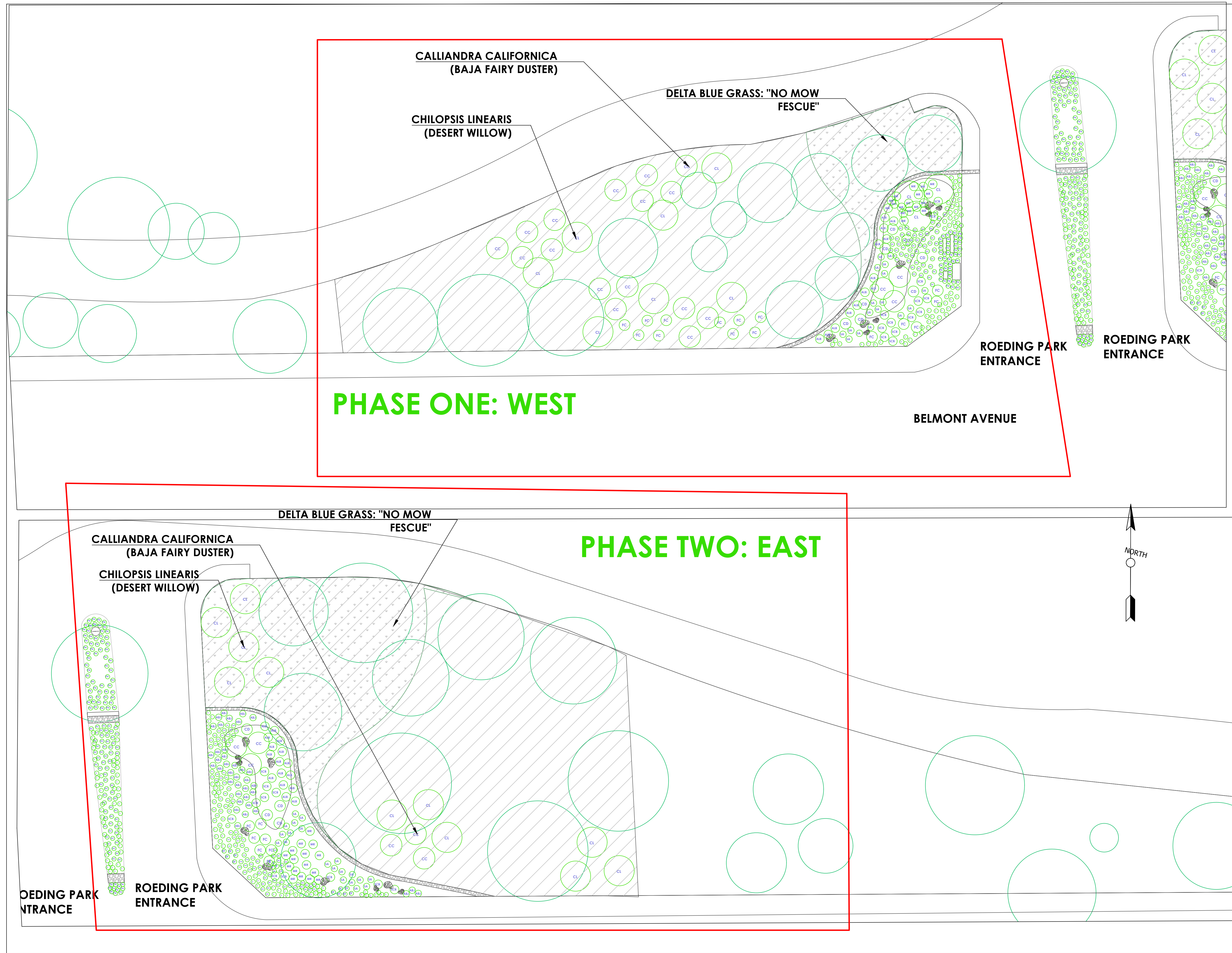
**Sphaeralcea ambigua**  
(desert globemallow)

**BELMONT AVENUE**

**ROEDING PARK ENTRANCE**

**ROEDING PARK ENTRANCE**

**EXISTING TREE**

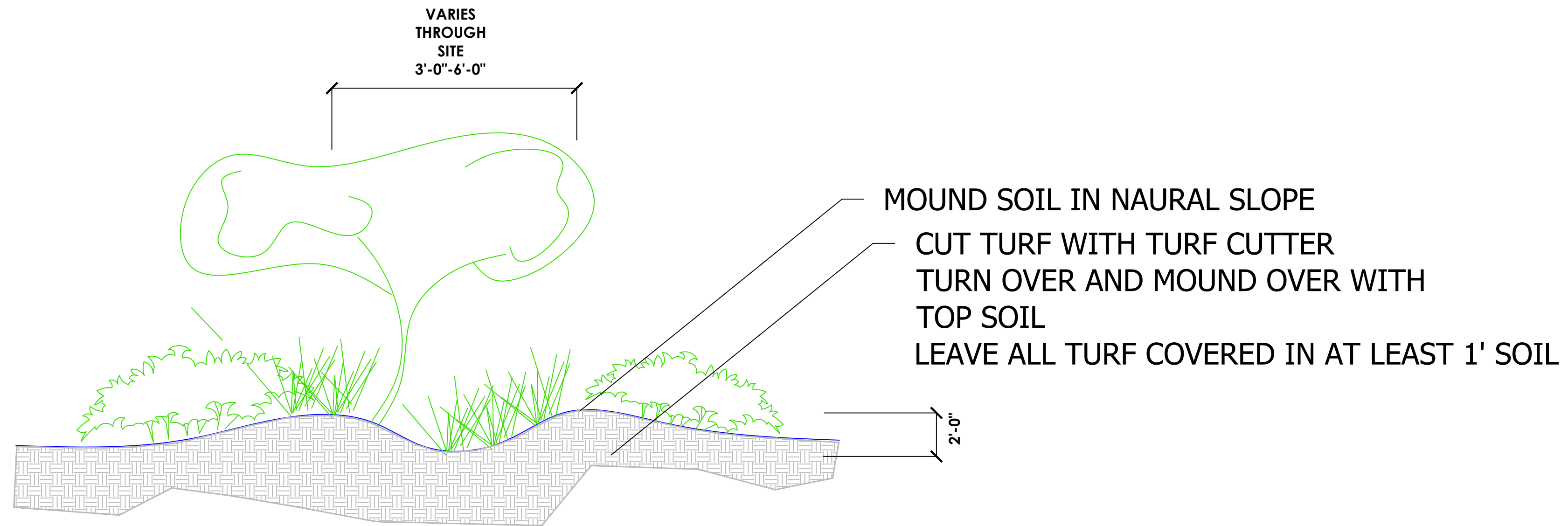


**ROEDING PARK ENTRANCE RENOVATION  
894 WEST BELMONT AVENUE  
FRESNO, CA 93728  
TURF REPLACEMENT PLANS - PLANTING OVERVIEW**

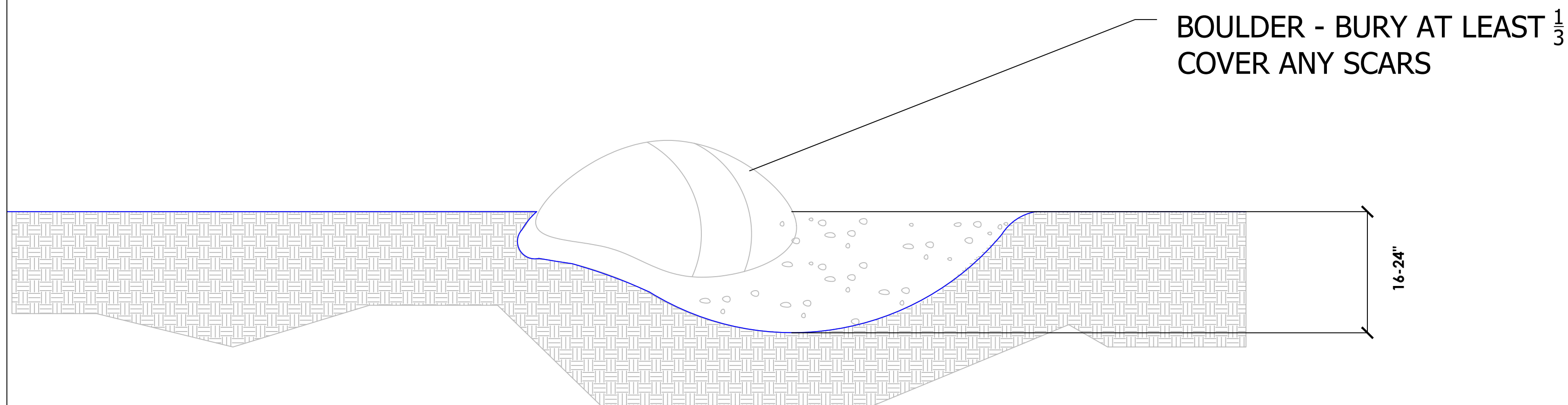
	OCTOBER 15	2017
No.	Revision/Issue	Date

**DESIGNED BY:**  
The Habitat Corridor Project  
**PROJECT CONTACT:**  
APRIL OWENS  
707.331.2070

Project -	CHAFFE	Sheet
Date	MAY 2017	<b>L-3</b>
Scale	1"=20'	



**BERM DETAIL  
NOT TO SCALE**



**BOULDER SETTING DETAIL  
NOT TO SCALE**



**ROEDING PARK ENTRANCE RENOVATION  
894 WEST BELMONT AVENUE  
FRESNO, CA 93728  
DETAILS**

	OCTOBER 15	2017
	AUGUST 2017 -	APP SET
No.	Revision/Issue	Date

**DESIGNED BY:  
The Habitat Corridor  
Project  
PROJECT CONTACT:  
APRIL OWENS  
707.331.2070**

Project - CHAFFE	Sheet
Date ROEDING MAY 2017	<b>L-4</b>
Scale 1"=10'	

**SITE NOTES**

**SITE PREPARATION- CLEAR EXISTING PLANT MATERIALS, FLAG EXISTING IRRIGATION HEADS, DIG SWALE AS DETAILED. PROTECT ANY EXISTING TREES FOR PROJECT INSTALLATION.**

1. **IRRIGATION - ALL EXISTING HEADS TO BE CONVERTED TO RAINBIRD RH13 SERIES HEADS. IRRIGATION SCHEDULE TO BE ADJUSTED PER SEASON AS RECOMMENDED BY THE HABITAT CORRIDOR PROJECT.**
2. **PLANTING - PLANTS TO BE LAID OUT PER PLAN AND ADJUSTED BY HABITAT CORRIDOR PROJECT IF NECESSARY. PLEASE GIVE ONE WEEK NOTICE FOR PLANT INSTALLATION.**
3. **PLANTING- ALL PLANTS ON LIST AVAILABLE AT SOURCE NOTED ON LEGEND.**
4. **PLANTING- CONTACT HABITAT CORRIDOR PROJECT FOR ANY PLANT SUBSTITUTION OR HELP WITH PROCURING PLANT MATERIALS. (707)634.6192**

**MATERIALS:**

**"NO MOW FESCUE" NATIVE MIX SUPPLIED BY DELTA BLUE GRASS**

**ARBOR MULCH - PROVIDED BY APPLICANT (FRESNO PARCS)**

**COMPOST**

**BOULDERS- TO BE SELECTED FROM LOCAL MATERIALS YARD**

**IRRIGATION - SWITCH OUT ALL IRRIGATION HEADS TO SPECIFIED MP ROTORS - ADD SEPARATE BUBBLERS TO ALL EXISTING TREES ON OWN VALVE  
ADD SEPARATE LANDSCAPE WATER METER**

**INSTALLATION NOTES:**

**NO-MOW FESCUE TO BE LAID ON TOP OF REMOVED TURF AREA AND TAMPED DOWN WITH ROLLERS OR PER MANUFACTURERS INSTRUCTIONS. EXTRA WATERING IS IMPORTANT IN FIRST MONTH TO ENSURE SUCCESS.**

**IRRIGATION RETROFIT TO BE ADJUSTED AS NEEDED BY REPRESENTATIVE OF PARCS AND IRRIGATION SCHEDULE SET SEASONALLY FOR FIRST TWO YEARS THEN NO IRRIGATION NECESSARY.**

**TURF REMOVAL: IT IS IMPORTANT THAT ALL EXISTING TURF BE COVERED BY SHEET-MULCH OR COVERED WITH AT LEAST 6" OF TOPSOIL TO ENSURE BERMUDA GRASS IS NOT ENCOURAGED.**

**PLANT LEGEND FRESNO REGION**

SYMBOL	BOTANICAL NAME	COMMON NAME	SIZE	QUANTITY WEST	QUANTITY EAST
ABJ	ARCTOSTAPHYLOS 'BERT JOHNSON'	BERT JOHNSON'S MANZANITA	1 GAL		38
AG	ARCTOSTAPHYLOS 'SUNSET'	MANZANITA	1 GAL		
AC	ASTER CHILENSIS	CALIFORNIA ASTER	1 GAL		85
ALB	ATRIPLEX LENTIFORMIS BREWERI	SALT BUSH	1 GAL	11	13
BAS	BERBERIS AQUIFOLIUM SKYLARK	BARBERRY	1 GAL		
BR	BERBERIS REPENS	CALIFORNIA BARBERRY	1 GAL		
CC	CALLIANDRA CALIFORNICA	BAJA FAIRY DUSTER	1 GAL	18	6
CD	CEANOTHUS 'DARK STAR'	CALIFORNIA LILAC 'DARK STAR'	1 GAL	5	9
CG	CEANTOTHUS GRISEUS	GROUND COVER CA LILAC	1 GAL		
CL	CHILOPIS LINEARIS	DESERT WILLOW	1 or 5 GAL	40	11
DC	DESCHAMPSIA CAESPITOSA	HAIR GRASS	1 GAL		36
Z	EPILOBIUM CANUM	CALIFORNIA FUCHSIA	1 GAL		
EFS	ENCELIA FARINOSA	BRITTLE BRUSH	1 GAL		
ELS	ERIOPHYLLUM LANATUM	DWARF WOOLY SUNFLOWER	1 GAL		
EF	ERIOGONUM FASCICULARIS 'WARREN LYTTLE'	CA BUCKWHEAT	1 GAL		14
EGR	ERIGONUM GRANDE RUBESCENS	RED BUCKWHEAT	1 GAL		21
EU	ERIGONUM UMBELLATUM POLYATHUM	SULFER BUCKWHEAT	1 GAL		
FC	FREMONTODENDRON 'KEN TAYLOR'	KEN TAYLOR'S FLANNEL BUSH	1 GAL	15	7
HA	HETEROMELES ARBUTIFOLIA	TOYON	1 GAL		
KA	KECKIELLA ANTIRRHINOIDES	YELLOW BUSH PENSTEMON	1 GAL		
MF	MALOCATHAMNUS FASCICULATUS	CHARPARRAL MALLOW	1 GAL		
MA	MIMULUS AURANTIACUS 'RED'	RED MONKEY FLOWER	1 GAL		
MR	MUHLENBERGIA RIGENS	DEER GRASS	1 GAL	16	16
PN	PHYLA NODIFOLIA	LIPPICIA (CALIFORNIA NATIVE ONLY)	4"	50	14
SA	SPHRAELCEA AMBIGUA	DESERT GLOBE MALLOW	1 GAL	15	20
SCB	SALVIA 'CELESTIAL BLUE'	CELESTIAL BLUE SAGE	1 GAL	15	11
SG	SALVIA 'GRACIAS'	GRACIAS SAGE	1 GAL		
z	ZAUSCHNERIA CANA	CALIFORNIA FUCHSIA	1 GAL	120	99

QUANTITIES NOTED FOR PLANTS ON LIST ARE USED ON PLANS - ALTERNATE PLANTS CAN BE SUBSTITUTED ESPECIALLY ONES ON THIS LIST.

**HABITAT CORRIDOR PROJECT IS NOT RESPONSIBLE FOR PROPER INSTALLATION OF THIS PROJECT. THESE PLANS ARE FOR DESIGN USES ONLY AND APPLICANT IS RESPONSIBLE FOR OVERSEEING PROPER INSTALLATION.**



**ROEDING PARK ENTRANCE RENOVATION  
894 WEST BELMONT AVENUE  
FRESNO, CA 93728  
PLANT LIST AND SITE NOTES**

	AUGUST 2017 -	APP SET
	OCTOBER 15	2017
No.	Revision/Issue	Date

**DESIGNED BY:  
The Habitat Corridor  
Project  
PROJECT CONTACT:  
APRIL OWENS  
707.331.2070**

Project -	ROEDING	Sheet
Date	MAY 2017	<b>L-5</b>
Scale	NTS	