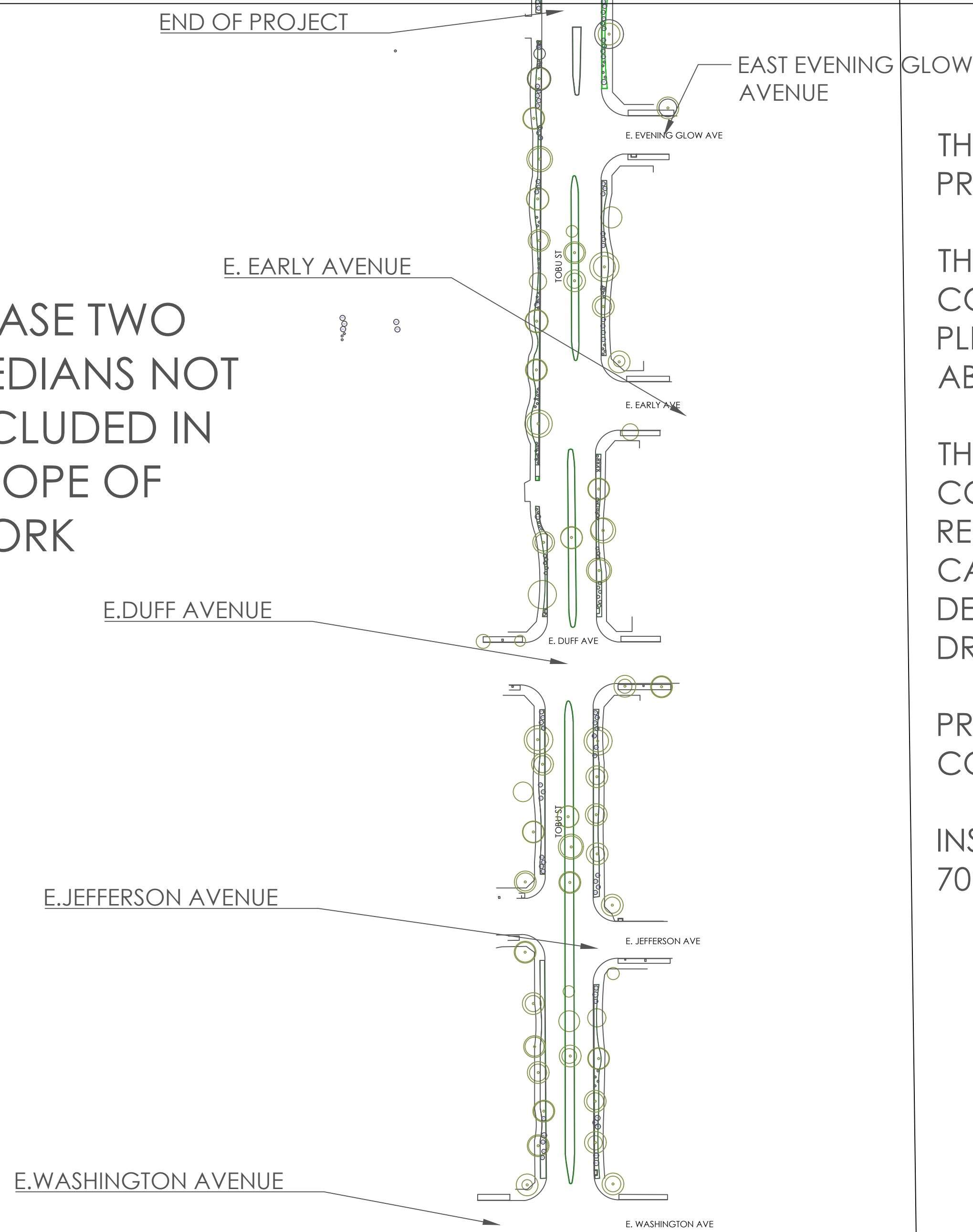


FNAME

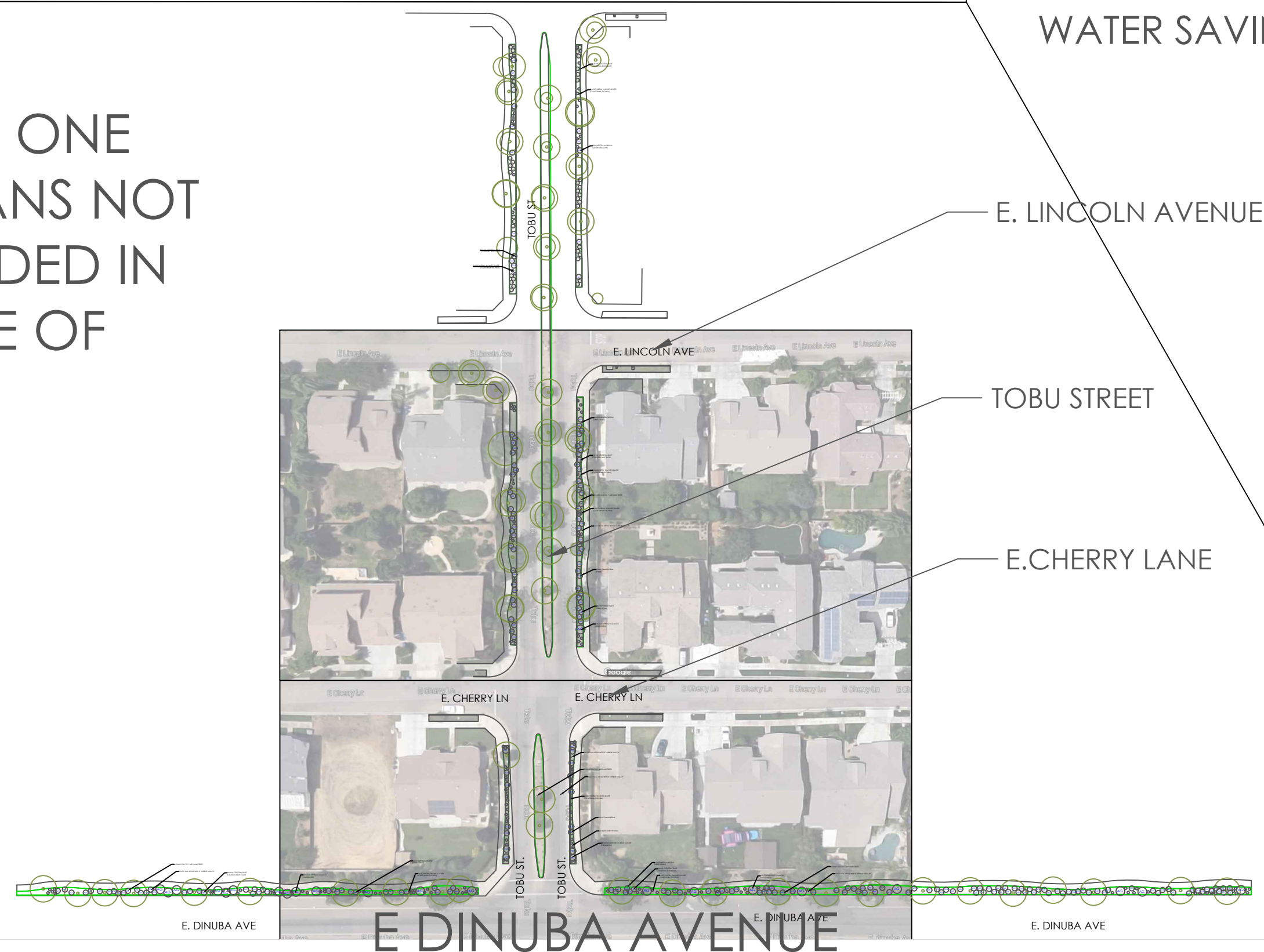
REVDATE

USER

PHASE TWO  
MEDIANS NOT  
INCLUDED IN  
SCOPE OF  
WORK



PHASE ONE  
MEDIANS NOT  
INCLUDED IN  
SCOPE OF  
WORK



### REVISION AND PLAN NOTES:

THIS IS A PROJECT OF THE INSTITUTIONAL TURF REPLACEMENT PROJECT. FOR PROJECT CONTACTS SEE BELOW.

THE APPLICANT : THE CITY OF REEDLEY IS RESPONSIBLE FOR QUALITY CONTROL AND TECHNICAL OVERSIGHT FOR THIS INSTALLATION. PLEASE CALL APRIL OWENS AT 707.331.2070 WITH ANY QUESTIONS ABOUT DESIGN, PLANT MATERIALS OR INSTALLATION.

THESE ARE THE CONSTRUCTION PLANS DEVELOPED BY THE HABITAT CORRIDOR PROJECT. THEY DIFFER FROM THE ORIGINAL PLANS BY: REPLACING PLANT MATERIALS ORIGINALLY SPECIFIED WITH CALIFORNIA NATIVE PLANTS. THE IRRIGATION OF THESE PLANTS IS DESIGNED IN THE ORIGINAL SUBMITTAL AND IT'S DESIGN WITH NEW DRIP IRRIGATION IS BY THE CITY OF REEDLEY.

PROJECT CONTACTS:  
CONSERVATION CORPS QUESTIONS: ENRIQUE RIOS 559.458.0914

INSTALLATION AND MATERIALS CONTACT APRIL OWENS  
707.331.2070

ESTIMATED AREAS:  
TURF REPLACEMENT:

PHASE ONE: 9,000 SF  
WATER SAVINGS: --- gallons/year (DWR Calculations)

PHASE TWO: 10,000 SF  
WATER SAVINGS: -- gallons/ year (DWR Calculations)



CITY OF REEDLEY  
RIVER RIDGE DEVELOPMENT  
DINUBA AVE/ TOBU ST CITY OF REEDLEY, CA 93654  
TURF REPLACEMENT PLANS

Revised	sept 22, 2017	- phased	plans
---------	---------------	----------	-------

No.	Revision/Issue	Date

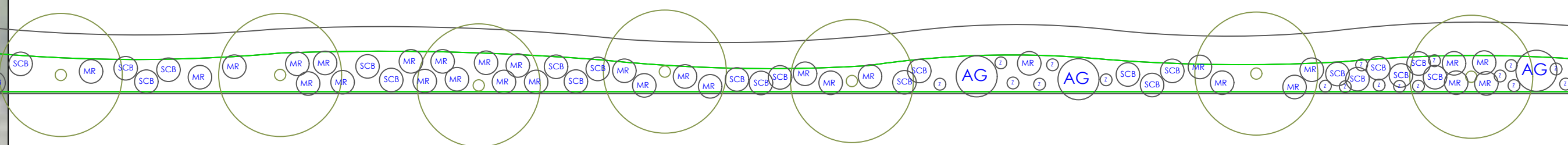
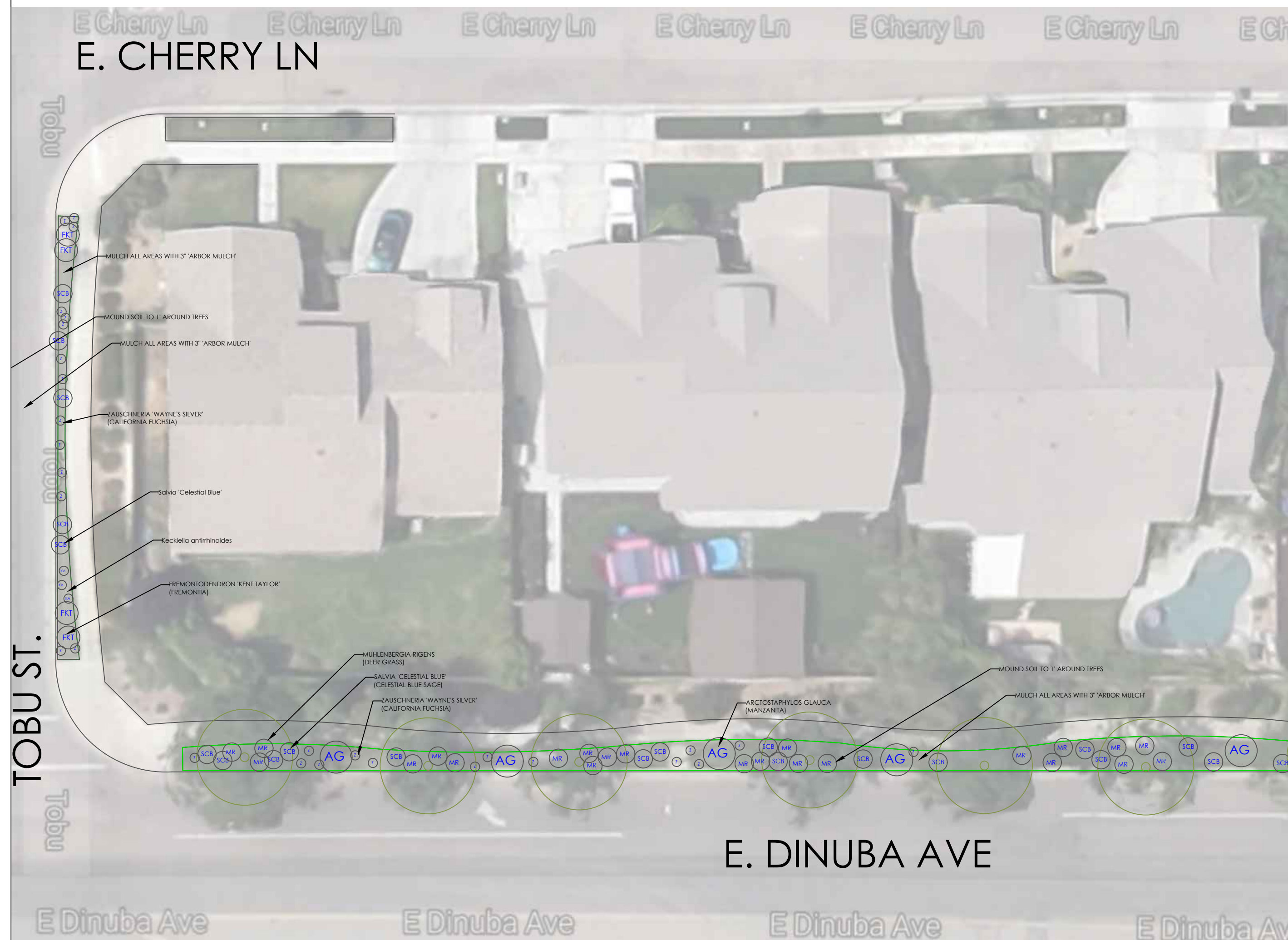
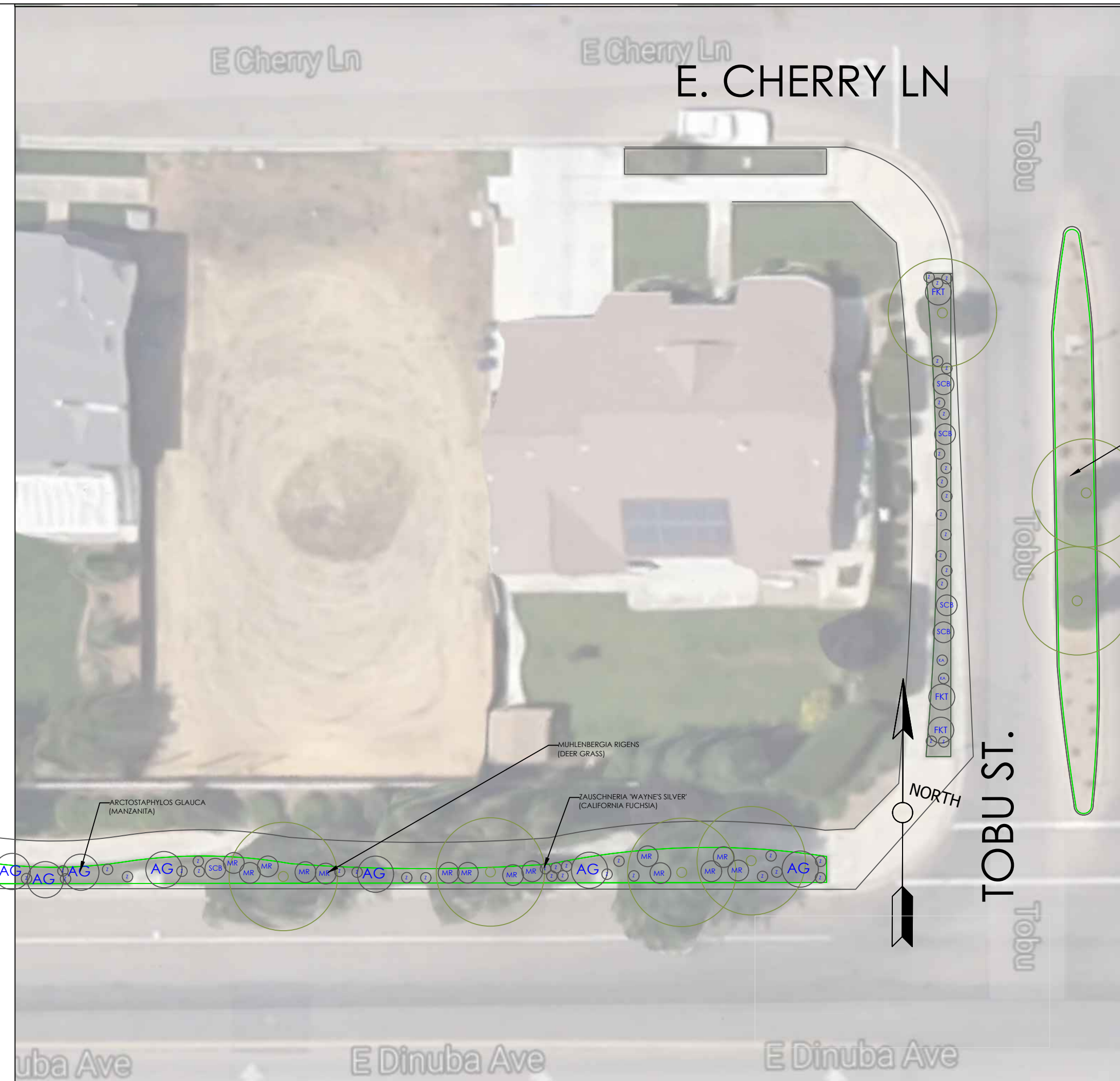
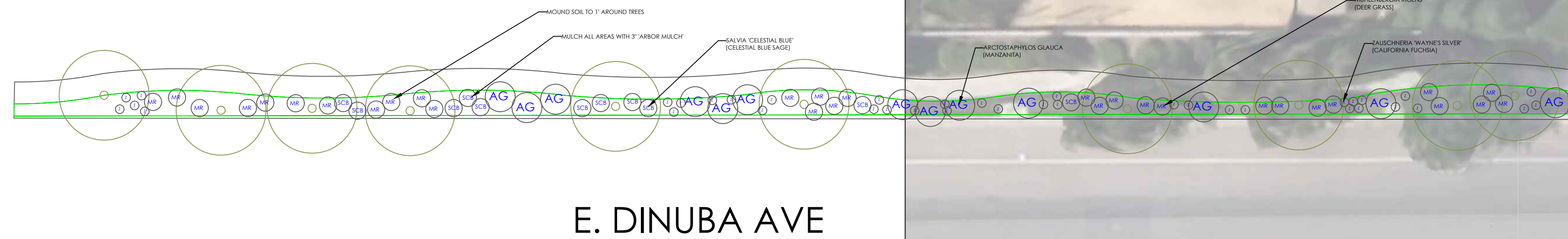
DESIGNED BY:  
The Habitat Corridor  
Project  
PROJECT CONTACT:  
APRIL OWENS  
707.331.2070

Project - REEDLEY PHASE	Sheet
Date MAY 2017	
Scale 1"=20'	

FNAME

REVDATE

USER

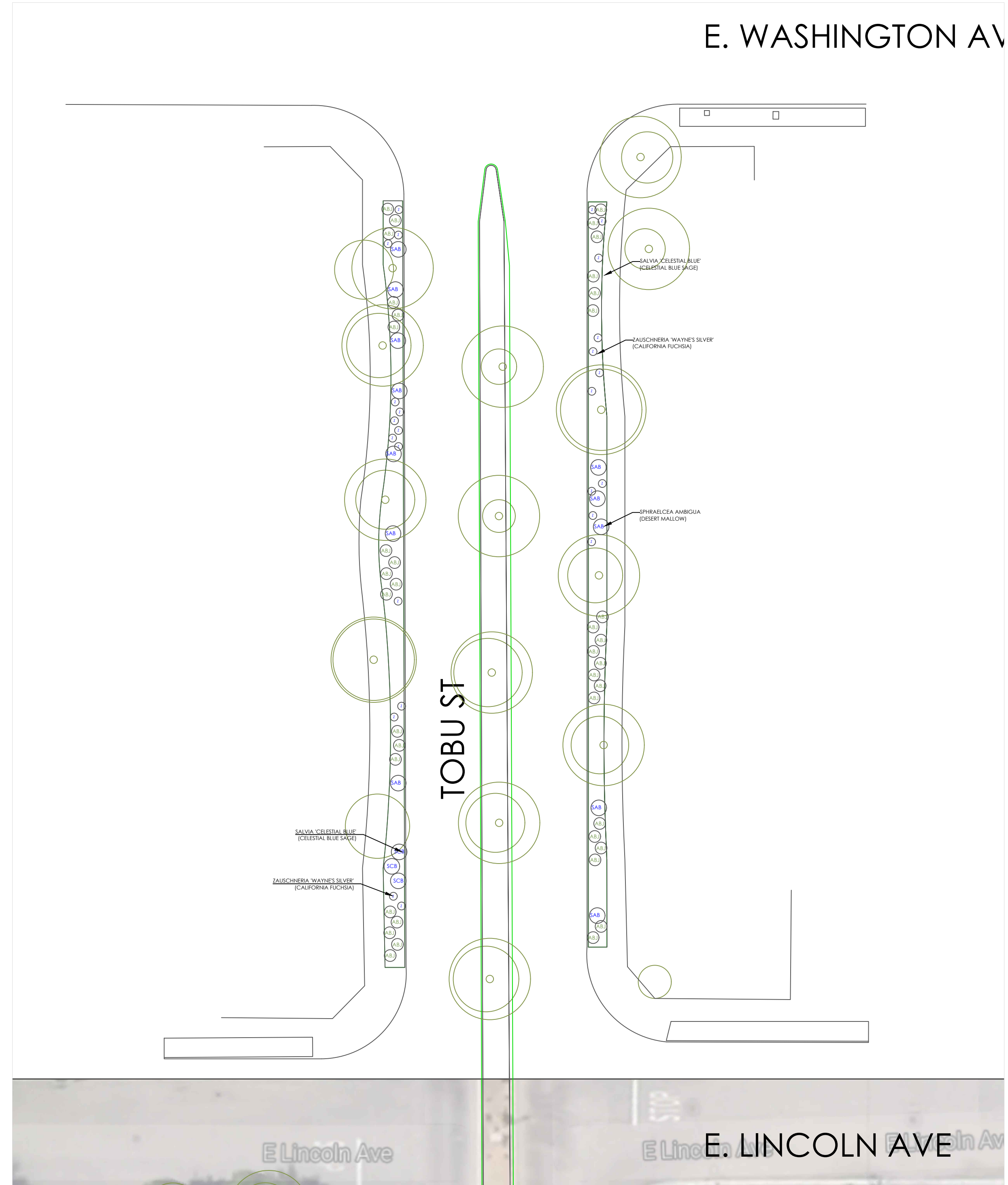
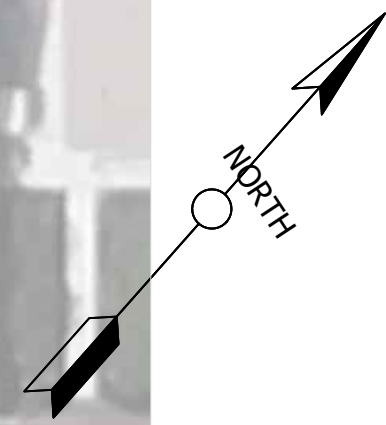
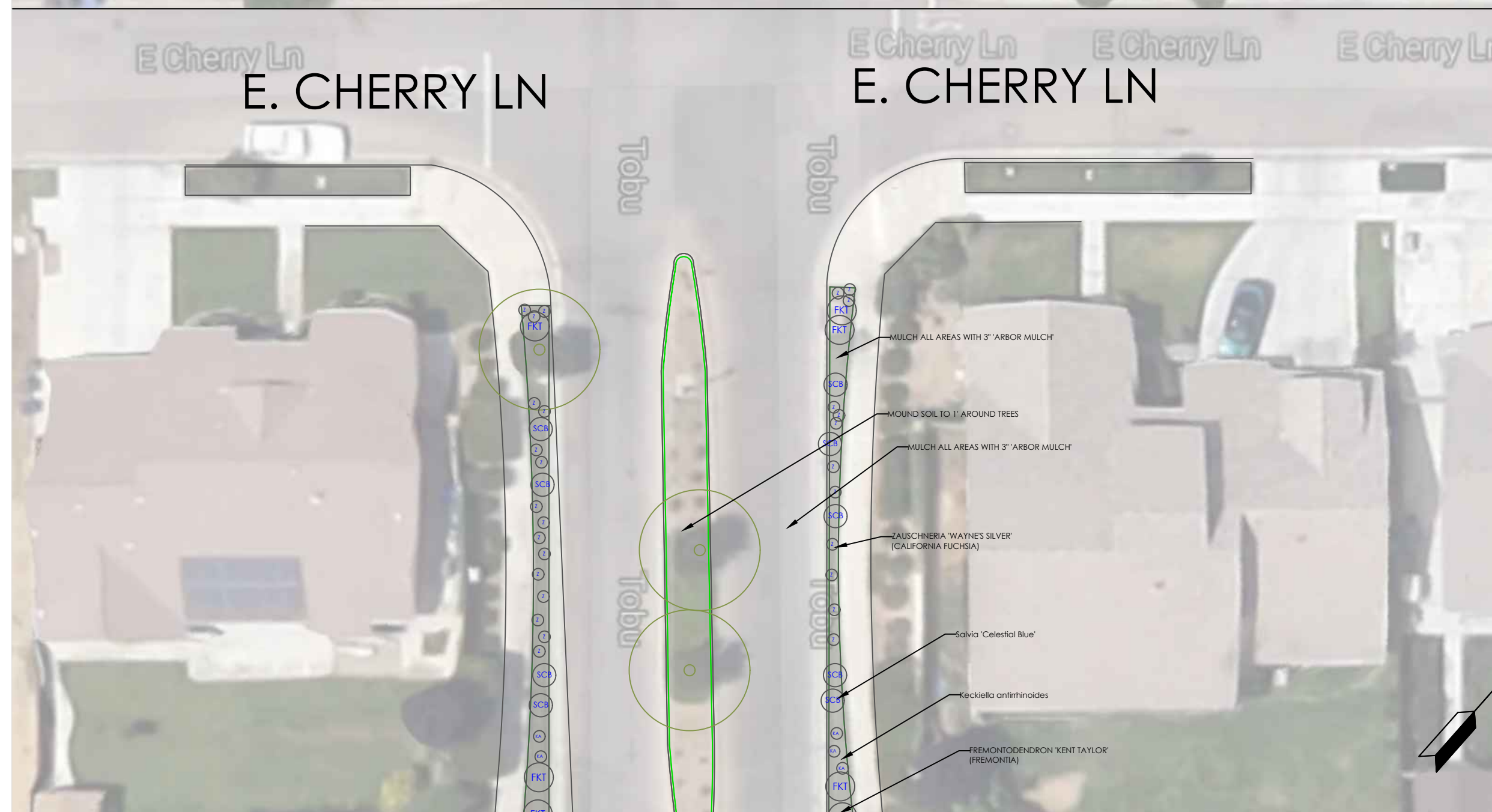


CITY OF REEDLEY  
 RIVER RIDGE DEVELOPMENT  
 DINUBA AVE/ TOBU ST CITY OF REEDLEY, CA 93654  
 TURF REPLACEMENT PLANS

Revised sept 22, 2017 - phased plans		
No.	Revision/Issue	Date

DESIGNED BY:  
 The Habitat Corridor  
 Project  
 PROJECT CONTACT:  
 APRIL OWENS  
 707.331.2070

Project: REEDLEY PHASE 1	Sheet
Date MAY 2017	L-1
Scale 1"=20'	



**CITY OF REEDLEY  
RIVER RIDGE DEVELOPMENT  
DINUBA AVE/ TOBU ST CITY OF REEDLEY, CA 93654  
TURF REPLACEMENT PLANS**

Revised sept 22, 2017 - phased plans		
No.	Revision/Issue	Date

DESIGNED BY:  
The Habitat Corridor  
Project  
PROJECT CONTACT:  
APRIL OWENS  
707.331.2070

Project REEDLEY PHASE 1	Sheet
Date MAY 2017	<b>L-2</b>
Scale 1"=20'	

**SITE NOTES**

SITE PREPARATION- CLEAR EXISTING PLANT MATERIALS, FLAG EXISTING IRRIGATION HEADS, PROTECT ANY EXISTING TREES FOR PROJECT INSTALLATION.

1. IRRIGATION - SEE IRRIGATION PLAN PROVIDED BY CITY AND COORDINATE WITH REPRESENTATIVE FROM CITY OF REEDLEY ON DRIP IRRIGATION AND NEW CONTROLLER
2. PLANTING - PLANTS TO BE LAID OUT PER PLAN AND ADJUSTED AROUND TREES AS NECESSARY BY REPRESENTATIVE FROM CITY OF REEDLEY.
3. PLANTING- ORDERED BY HCP AND DELIVERED TO CORPORATION YARD AT CITY OF REEDLEY
4. PLANTING- CONTACT HABITAT CORRIDOR PROJECT FOR ANY PLANT SUBSTITUTION OR HELP WITH PROCURING PLANT MATERIALS. 707.331.2070
5. AFTER INSTALLATION, MULCH ENTIRE SITE. SEE MATERIALS LIST FOR TYPE.

MATERIALS:  
"ARBOR" MULCH

IRRIGATION - DRIP PER CITY OF REEDLEY PLANS  
SITE ALREADY HAS SEPARATE LANDSCAPE WATER METER

SCOPE OF WORK:  
REMOVE TURF TO LANDSCAPE WASTE  
PROTECT TREE ROOTS  
INSTALL DRIP IRRIGATION - CAP EXISTING IRRIGATION  
INSTALL PLANT MATERIALS - THEY WILL NEED TO BE ADJUSTED SO TREE ROOTS ARE PROTECTED  
CHECK IRRIGATION  
MULCH

ESTIMATED AREAS:  
TURF REPLACEMENT:

PHASE ONE: 9,000 SF  
WATER SAVINGS: --- gallons/year (DWR Calculations)

PHASE TWO: 10,000 SF  
WATER SAVINGS: -- gallons/ year (DWR Calculations)

**LEGEND**

SYMBOL	BOTANICAL NAME	COMMON NAME	SPACING*	QUANTITY *	SIZE
AG	Arctostaphylos 'Sunset'	Sunset Manzanita	4' ON CENTER	18	1 GAL
ABJ	Arctostaphylos 'Bert Johnson'	Groundcover Manzanita	4' ON CENTER	8 + 18	1 GAL
Z	Epilobium 'Everetts Choice' ; other sub	CA Fuchsia	4' ON CENTER	330	1 GAL
FKT	Cercis occidentalis	Redbud	6' ON CENTER	41	1 GAL
KA	Keckiella Antirrhinoides	Yellow Bush Penstemon	3' ON CENTER	7 + 10	1 GAL
MR	Muhlenbergia rigens	Deer Grass	4' ON CENTER	165 + 20	1 GAL
SCB	Salvia Celestial Blue or mix with other salvia	Celestial Blue Sage	3' ON CENTER	183	1 GAL
SAB	Sphaeralcea ambigua or incana	Desert Mallow/Globe Mallow	4' ON CENTER	10	1 GAL

\*SPACING OF PLANTS WILL VARY FROM PLANS PER TREE ROOTS.

PLEASE ADJUST AS NEEDED. ON CENTER = FROM CENTER OF THE PLANT TO CENTER OF THE NEXT PLANT.

WHENEVER POSSIBLE DO NOT LINE UP PLANTS - PLANT IN A 'V' SHAPE FOR MORE NATURAL LOOK.

**NURSERY RESOURCES**

ANTELOPE VALLEY RESOURCE CONSERVATION NURSERY 10148 WEST AVE. I LANCASTER, CA 93536 PHONE: 661.942.7306 EMAIL: AVRCDC@CARCD.ORG	LAS PILATAS NURSERY 3232 LAS PILATAS RD SANTA MARGARITA, CA 93453 PHONE 805.439.5992 EMAIL PENNY@LAS PILATAS.COM	RANA CREEK WHOLESALE NURSERY 35351 EAST CARMEL VALLEY ROAD CARMEL VALLEY, CA 93924 PHONE: 831.659.2830 EMAIL:NURSERY@RANACREEKNURSERY.COM
CENTRAL COAST WILDS 336A GOLF CLUB DRIVE SANTA CRUZ, CA 95060 PHONE: 831.459.0655 EMAIL: INFO@CENTRAL COASTWILDS.COM	MANZANITA NURSERY 880 CHALK HILL ROAD SOLVANG, CA 93463 PHONE: 805.688.9692 EMAIL: MANZANITANURSERY@EARTHLINK.NET	SANTA BARBARA NATIVES 14900 CALLE REAL GAVIOTA, CA 93117 PHONE: 805.698.4994 EMAIL: JEFF@SBNATIVES.COM
EL NATIVO GROWERS, INC. 200 S. PECKHAM ROAD AZUSA, CA 91702 PHONE: 626.969.8449 EMAIL: SALES@ELNATIVOGROWERS.COM	MATILJA NURSERY 8225 WATERS ROAD MOORPARK, CA 93021 PHONE: 805.523.8604 WEB SITE CONTACT: WWW.MATILJANURSERY.COM/CONTACT-US	THEODORE PAYNE FOUNDATION FOR WILD FLOWERS AND NATIVE PLANTS 10459 TUXFORD ST SUN VALLEY, CA 91352 PHONE 818.768.1802 WEB SITE CONTACT: THEODOREPAYNE.ORG/CONTACT
ELKHORN NATIVE PLANT NURSERY 1957B HIGHWAY1 MOSS LANDING, CA 95039 PHONE: 831.763.1207 WEB SITE CONTACT: WWW.ELKHORNNURSERY.COM/CONTACTORDERING	MOCKING BIRD NURSERY 1670 JACKSON ST RIVERSIDE, CA 92504 PHONE: 951.780.3571 EMAIL: INFO@MOCKINGBIRDNURSERY.COM	



CITY OF REEDLEY  
 RIVER RIDGE DEVELOPMENT  
 DINUBA AVE/ TOBU ST CITY OF REEDLEY, CA 93654  
 TURF REPLACEMENT PLANS

Revised sept 22, 2017 - phased plans		
No.	Revision/Issue	Date

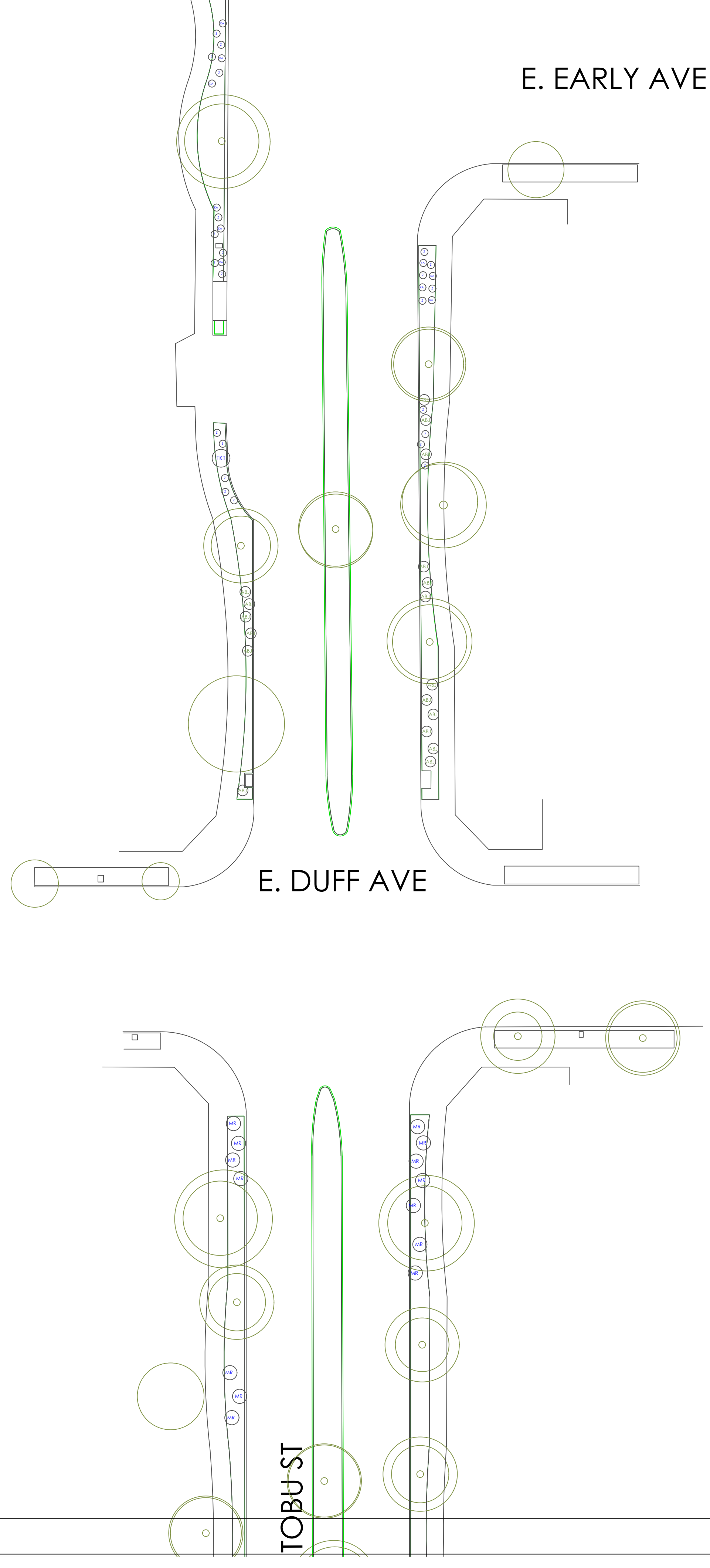
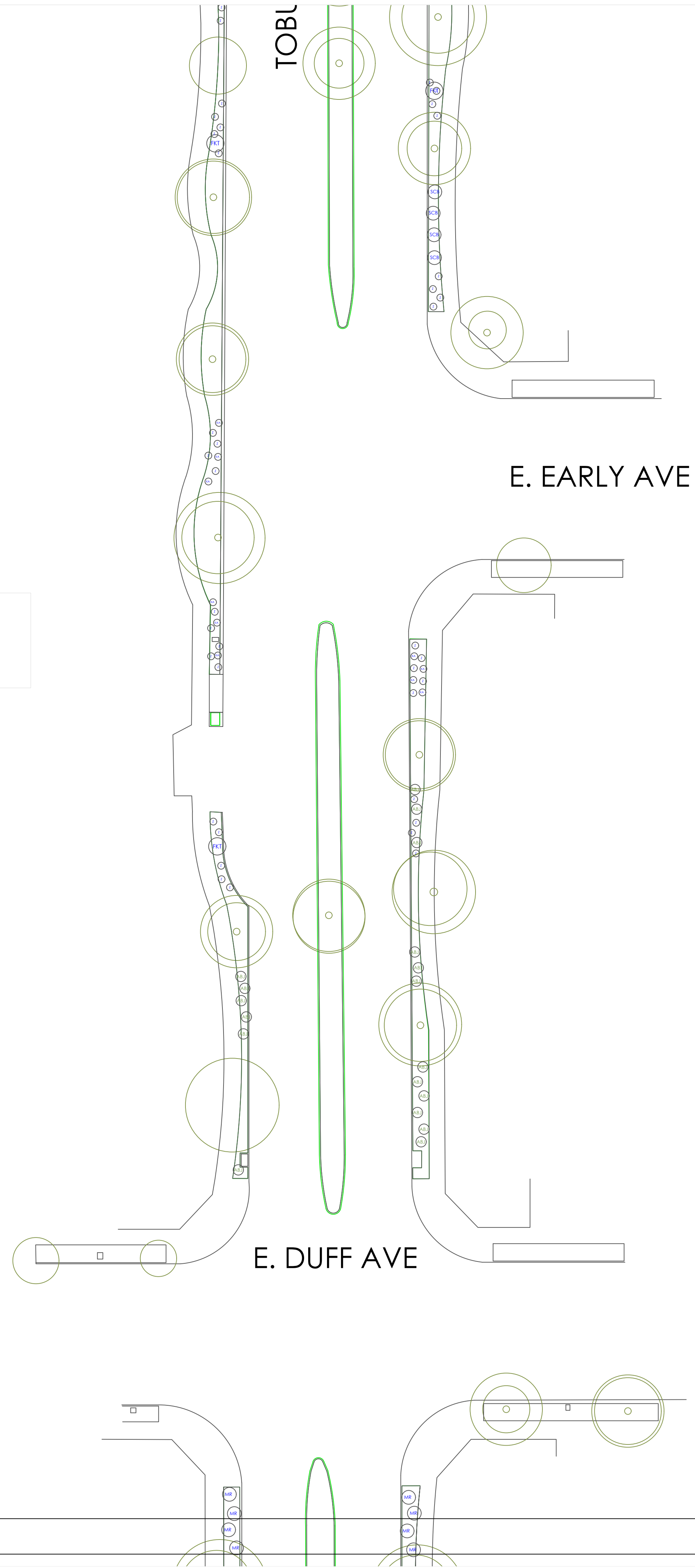
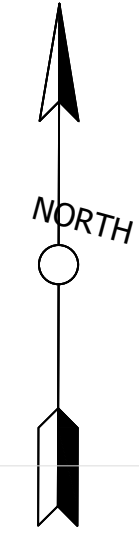
DESIGNED BY:  
The Habitat Corridor Project  
PROJECT CONTACT:  
APRIL OWENS  
707.331.2070

Project: REEDLEY PHASE 1	Sheet
Date: DATE MAY 2017	L-3
Scale: SCALE 1"=20'	

F NAME

REVDATE

USER



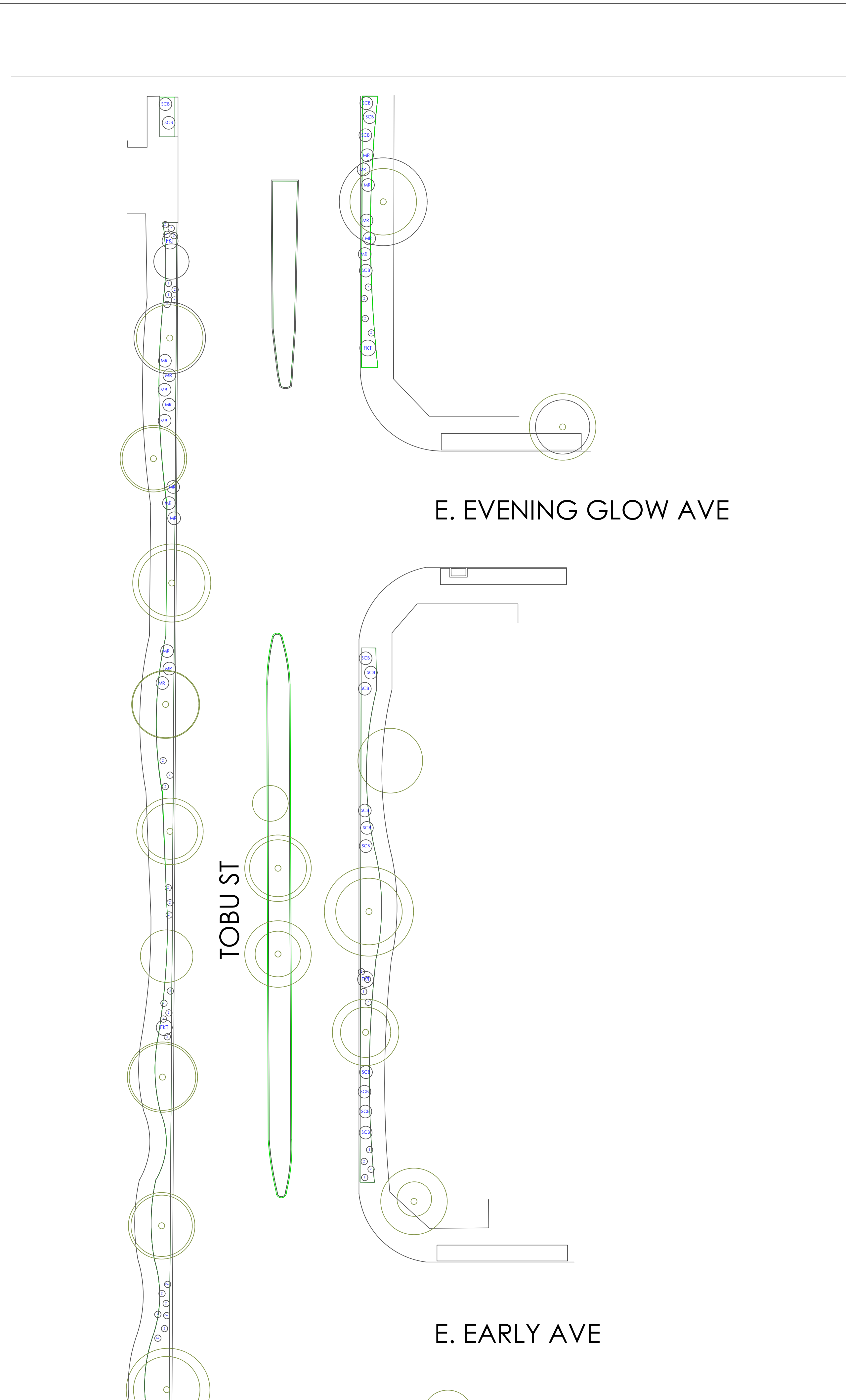
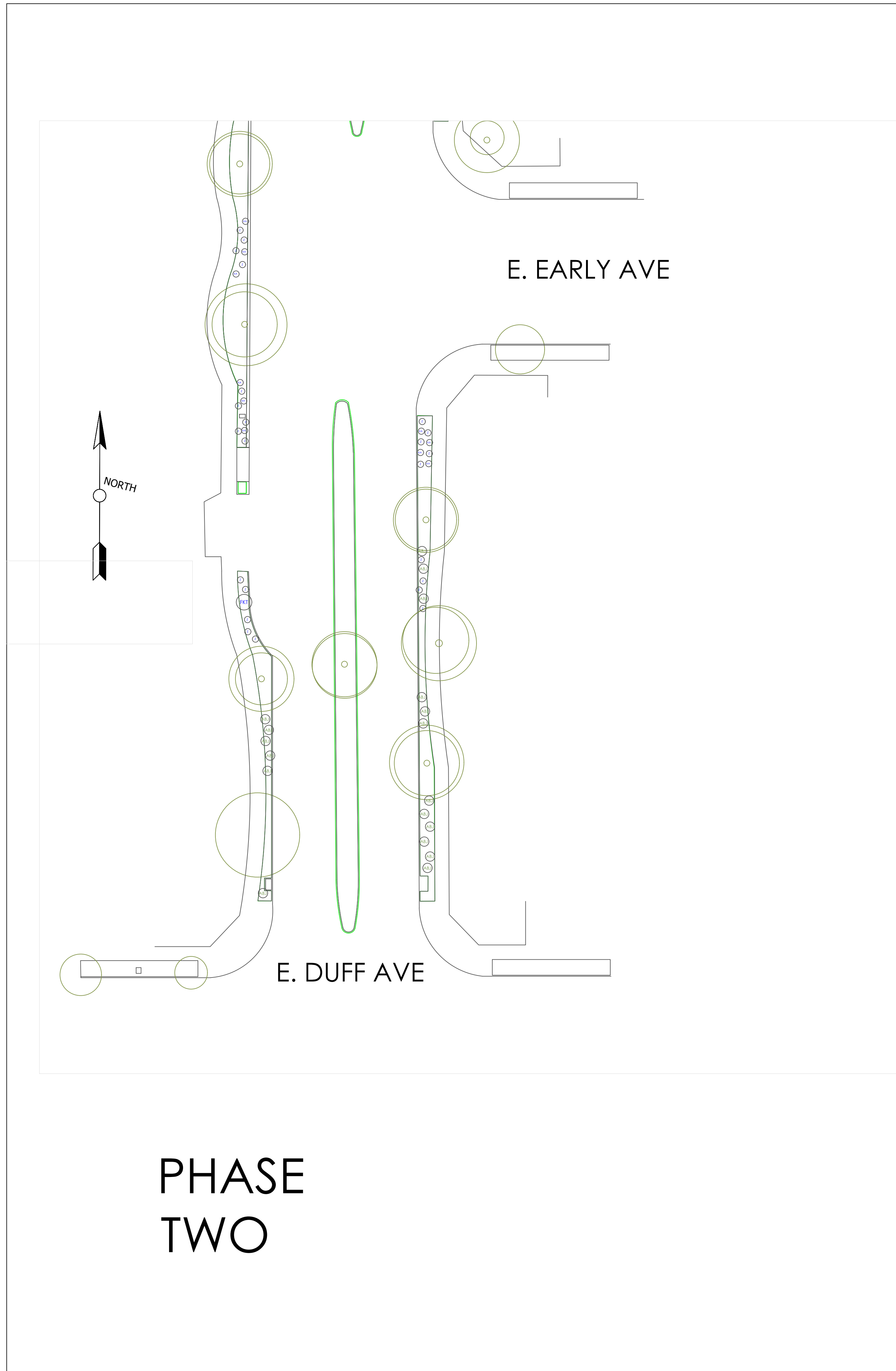
CITY OF REEDLEY  
 RIVER RIDGE DEVELOPMENT  
 DINUBA AVE/ TOBU ST CITY OF REEDLEY, CA 93654  
 PHASE TWO

Revised sept 22, 2017 - phased plans

No.	Revision/Issue	Date

DESIGNED BY:  
 The Habitat Corridor  
 Project  
 PROJECT CONTACT:  
 APRIL OWENS  
 707.331.2070

Project	REEDLEY PHASE	Sheet
Date	MAY 2017	<b>L-4</b>
Scale	SCALE	



CITY OF REEDLEY  
RIVER RIDGE DEVELOPMENT  
DINUBA AVE/ TOBU ST CITY OF REEDLEY, CA 93654  
PHASE TWO

Revised sept 22, 2017 - phased plans		
No.	Revision/Issue	Date

DESIGNED BY:  
The Habitat Corridor  
Project  
PROJECT CONTACT:  
APRIL OWENS  
707.331.2070

Project REEDLEY PHASE 1	Sheet
Date MAY 2017	<b>L-5</b>
Scale SCALE	